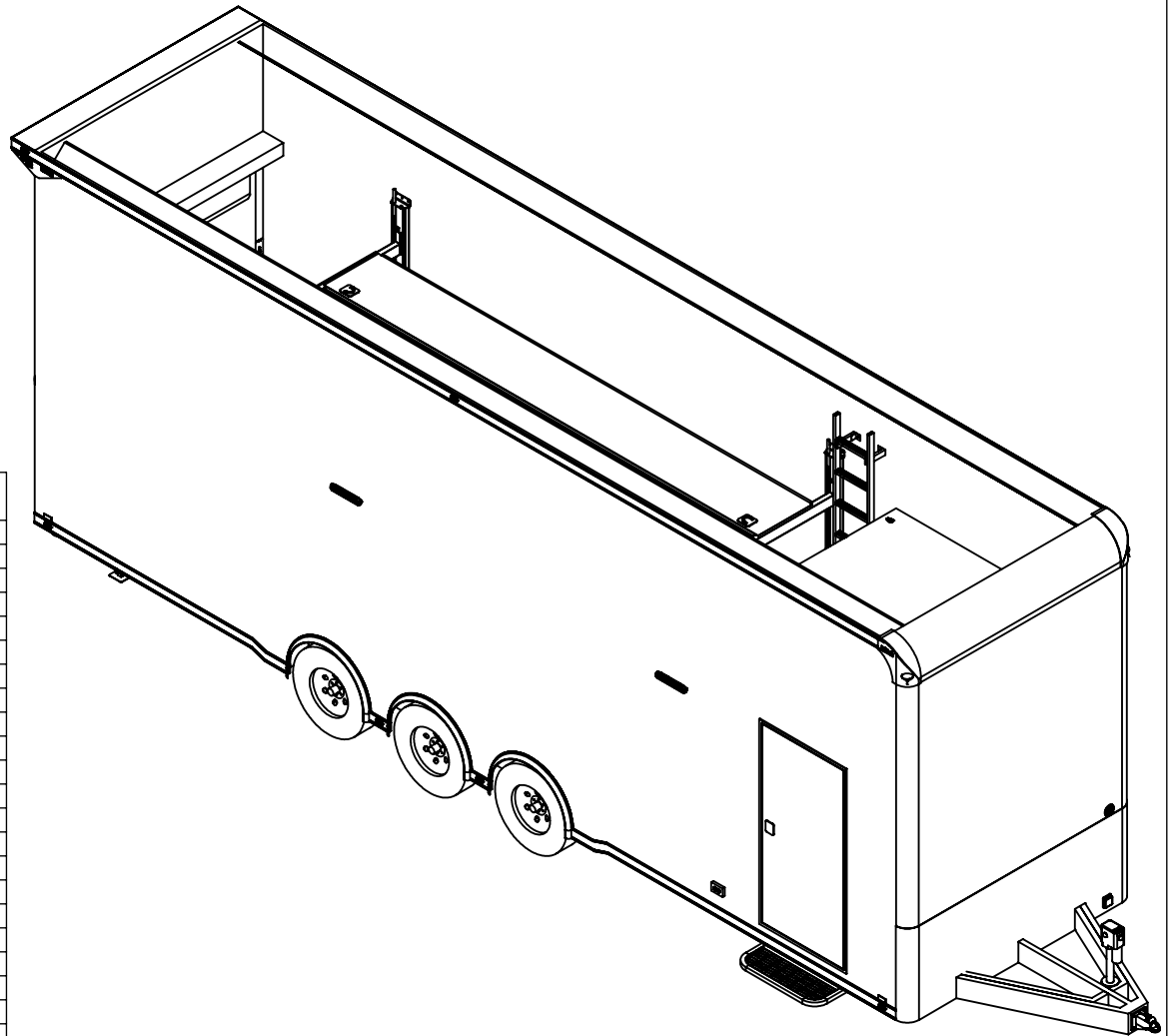
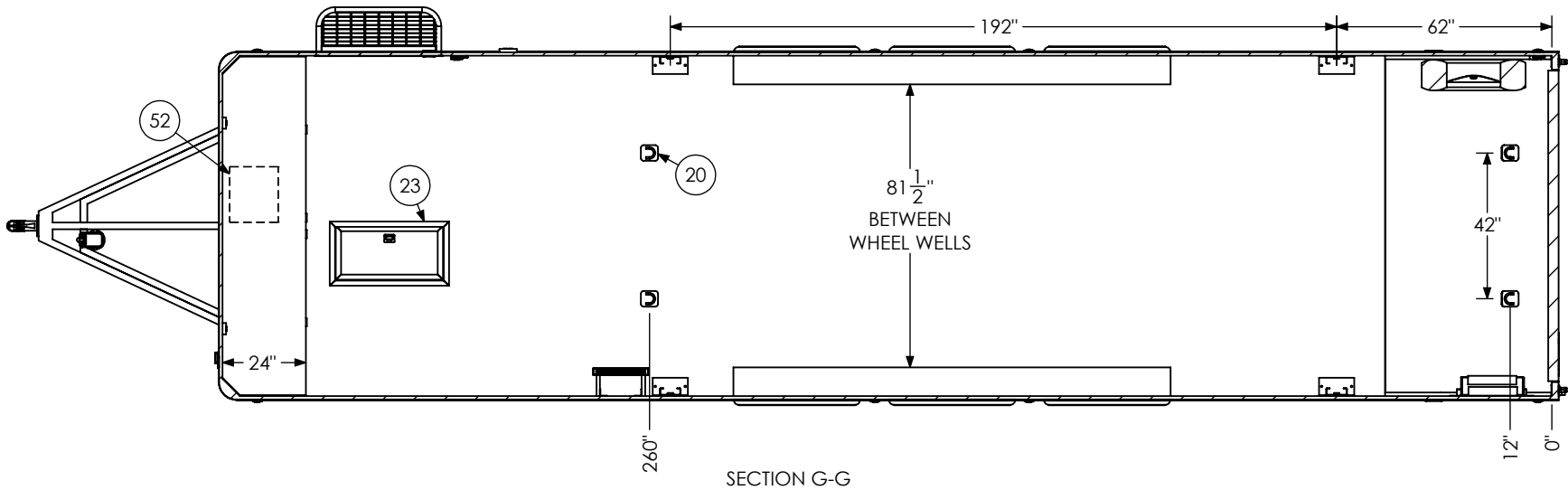
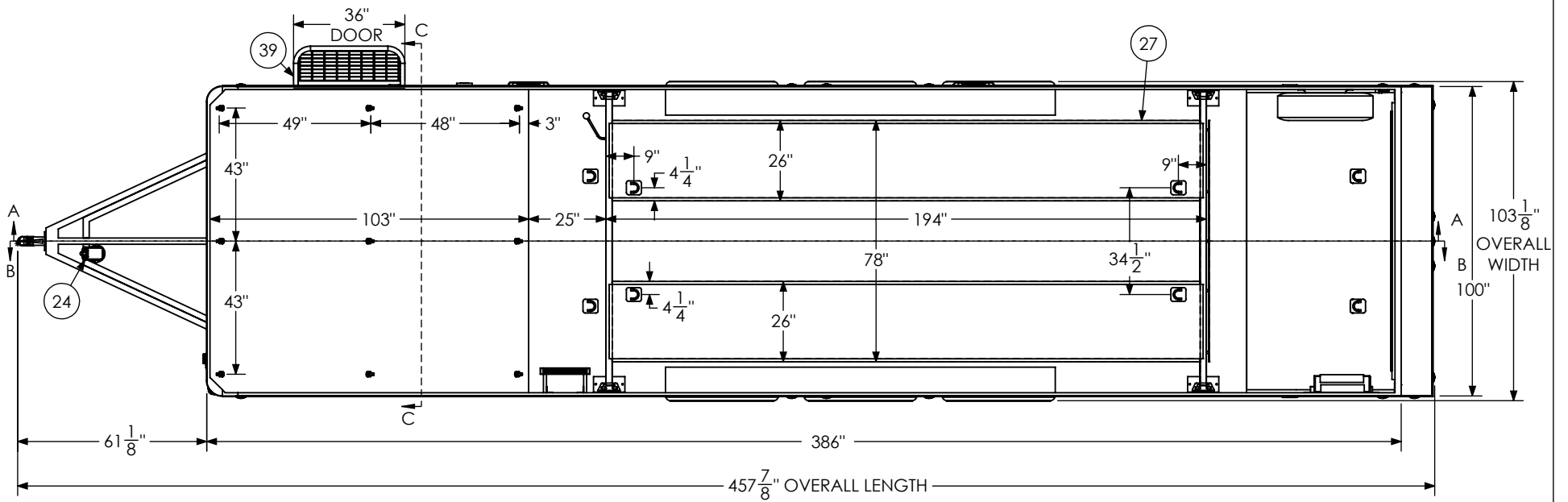


ITEM NO.	FILE NAME	DESCRIPTION	QTY.
1	Axle, Dexter	7000#, 22.5 UP, 93HF, 78AB T	3
8	BSL Cabinet, Overhead		1
9	BSL Cabinet, Straight Base		1
10	Battery Box		1
11	Battery Vent		1
12	Bumpers	1"	1
13	Cast Corners		1
14	Caster Wheel		2
17	Coupler - Flat Nose	25K - Bulldog	1
18	Cove - BSL		2
19	Cover, Spring Assist		1
20	D-Ring	5,000	8
21	Door, Entrance	36" x 76" RHS	1
23	In-Floor Compartment - Lite	Hydraulics Box (14"x30")	1
24	Jack, Power	4500#	1
25	Jack, Stabilizer		2
26	LICENSE PLATE BRACKET		1
27	Lift Assembly SS -BSL	16'	1
28	Lift Ramp Storage Assembly		1
29	Light	18" 12v LED	8
30	Light, License Plate		1
31	Load Center	30 Amp L/C - 60 Amp Conv	1
32	Loading Light - LED	13.7" 12V Loading Light	3
33	Motorbase Plug	30 Amp	1
34	Outlet	120V 20 Amp	4
35	Outlet	Lift Control Plug	1
36	Ramp Extension	16" Transition Flap	1
39	Slide Out Step	36" Wide	1
40	Spare Tire Assembly		1
41	Switch	12v Cutoff	1
42	Switch	2 - 12V Switches	2
43	Switch	1 - 12V Switch	1
44	Tail Light	Slimline	4
45	Tire	ST235/85R16	6
48	Attic - BSL		1
49	Rope Ring		9
50	Ladder - BSL	16" x 106"	1
51	Paddle Latch		2
52	Winch Plate		1



PROPRIETARY AND CONFIDENTIAL
 THE INFORMATION CONTAINED IN THIS DRAWING IS THE
 SOLE PROPERTY OF INTECH TRAILERS. ANY REPRODUCTION
 IN PART OR AS A WHOLE WITHOUT THE WRITTEN PERMISSION
 OF INTECH TRAILERS IS PROHIBITED.

SCALE: 1:60	NAME	DATE	<i>inTech Trailers</i> inTech - Lite Stacker BSL8.5x32TTA5 - STANDARD BOM		
DRAWN	NjM	8/20/24			
ALL DIMENSIONS ARE IN INCHES AND ARE NOMINAL. DIMENSIONS ON ACTUAL TRAILER MAY VARY FROM WHAT IS SHOWN ON PRINT BASED ON ACTUAL FRAMING AND TRAILER STRUCTURE. UNLESS NOTED AS CRITICAL			DWG. NO.	SHEET 1 OF 5	REV.
			BSL8.5x32TTA Trailer Assembly - Standard	E	



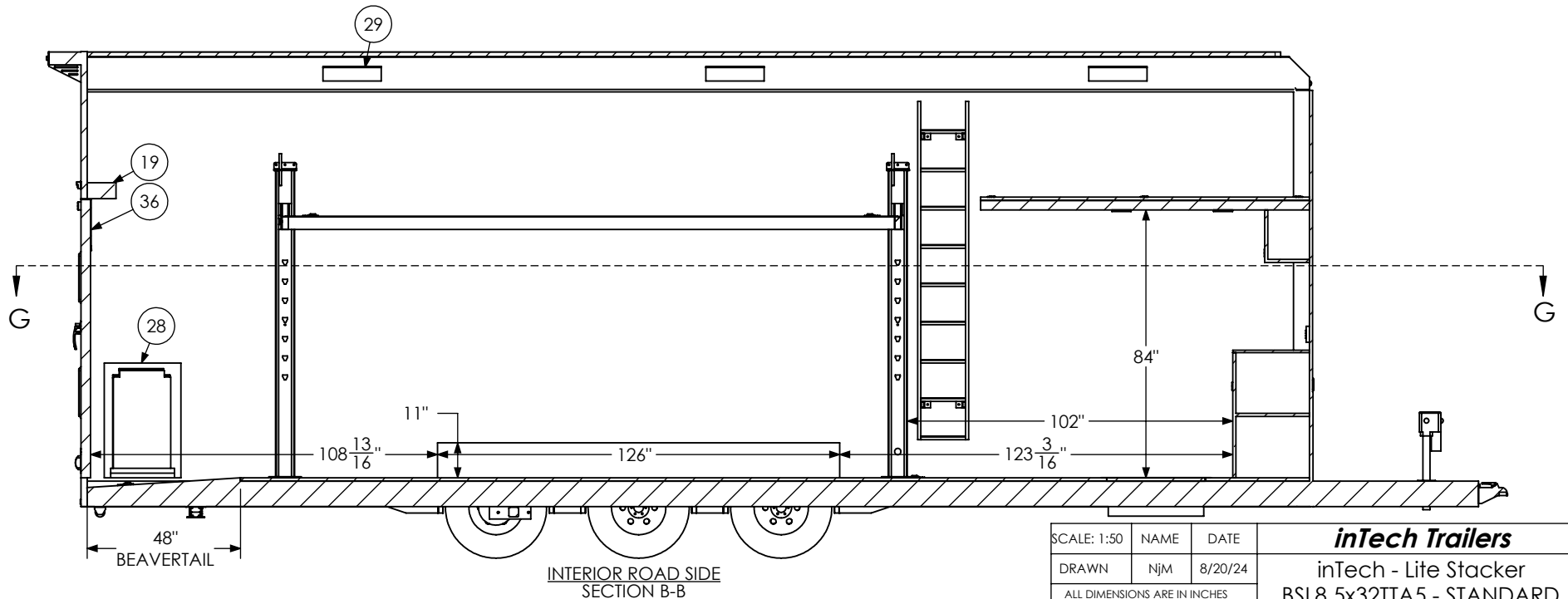
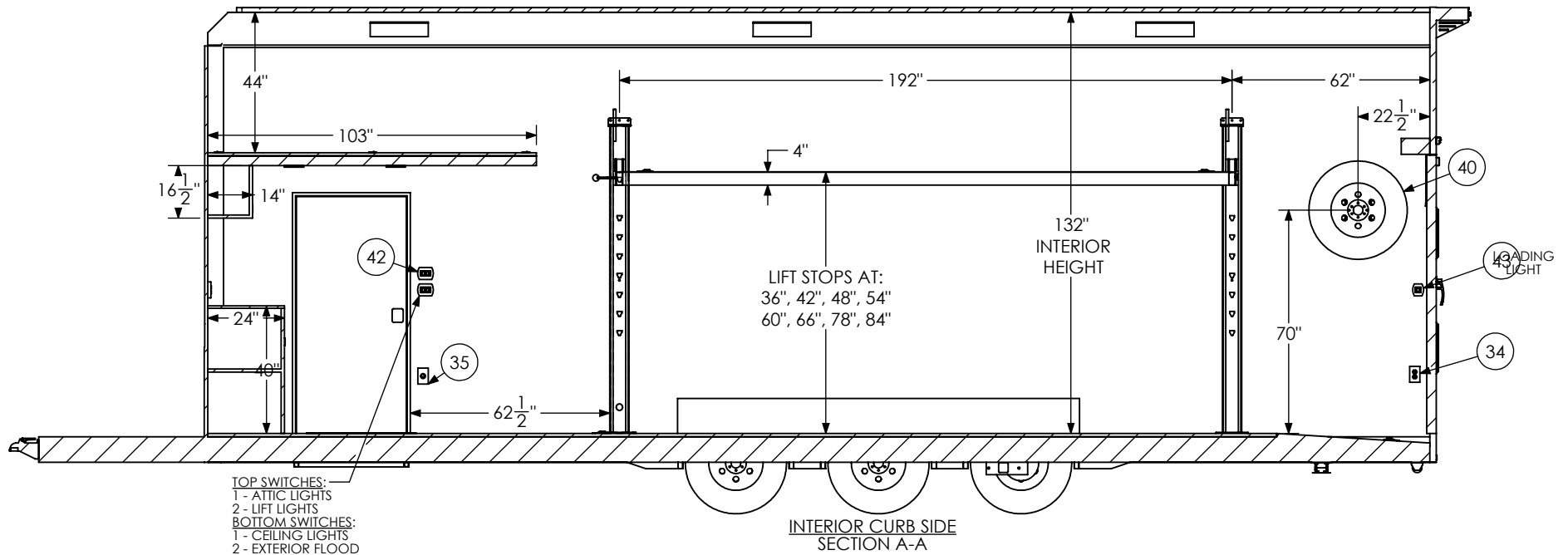
SECTION G-G

SCALE: 1:50	NAME	DATE
DRAWN	NjM	8/20/24

ALL DIMENSIONS ARE IN INCHES AND ARE NOMINAL. DIMENSIONS ON ACTUAL TRAILER MAY VARY FROM WHAT IS SHOWN ON PRINT BASED ON ACTUAL FRAMING AND TRAILER STRUCTURE. UNLESS NOTED AS CRITICAL

PROPRIETARY AND CONFIDENTIAL
 THE INFORMATION CONTAINED IN THIS DRAWING IS THE SOLE PROPERTY OF INTECH TRAILERS. ANY REPRODUCTION IN PART OR AS A WHOLE WITHOUT THE WRITTEN PERMISSION OF INTECH TRAILERS IS PROHIBITED.

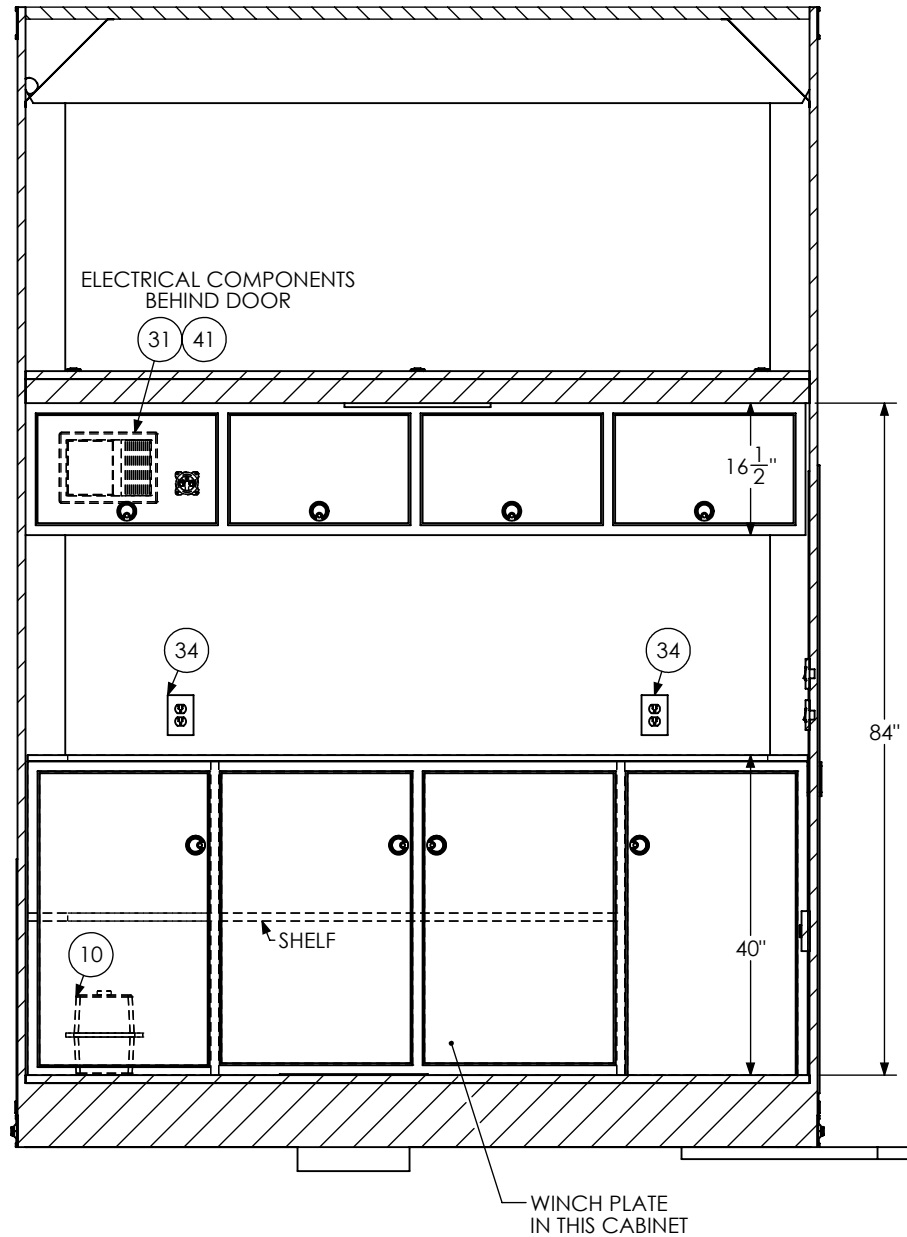
<i>inTech Trailers</i>		
inTech - Lite Stacker BSL8.5x32TTA5 - STANDARD FLOORPLAN		
DWG. NO. BSL8.5x32TTA Trailer Assembly - Standard	SHEET 2 OF 5	REV. E



PROPRIETARY AND CONFIDENTIAL
THE INFORMATION CONTAINED IN THIS DRAWING IS THE SOLE PROPERTY OF INTECH TRAILERS. ANY REPRODUCTION IN PART OR AS A WHOLE WITHOUT THE WRITTEN PERMISSION OF INTECH TRAILERS IS PROHIBITED.

SCALE: 1:50	NAME	DATE
DRAWN	NjM	8/20/24
ALL DIMENSIONS ARE IN INCHES AND ARE NOMINAL. DIMENSIONS ON ACTUAL TRAILER MAY VARY FROM WHAT IS SHOWN ON PRINT BASED ON ACTUAL FRAMING AND TRAILER STRUCTURE. UNLESS NOTED AS CRITICAL.		

<i>inTech Trailers</i>		
inTech - Lite Stacker		
BSL8.5x32TTA5 - STANDARD		
INTERIOR SIDES		
DWG. NO.	SHEET 3 OF 5	REV.
BSL8.5x32TTA Trailer Assembly - Standard	E	E



INTERIOR FRONT SECTION C-C

WINCH PLATE IN THIS CABINET

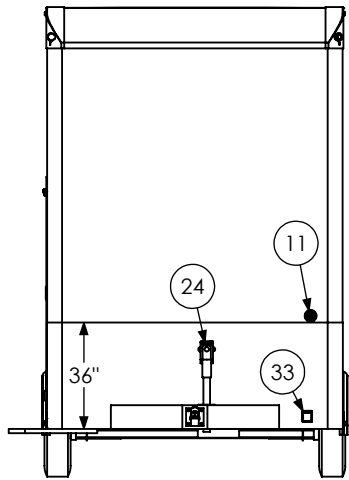
PROPRIETARY AND CONFIDENTIAL
 THE INFORMATION CONTAINED IN THIS DRAWING IS THE SOLE PROPERTY OF INTECH TRAILERS. ANY REPRODUCTION IN PART OR AS A WHOLE WITHOUT THE WRITTEN PERMISSION OF INTECH TRAILERS IS PROHIBITED.

SCALE: 1:24 NAME DATE

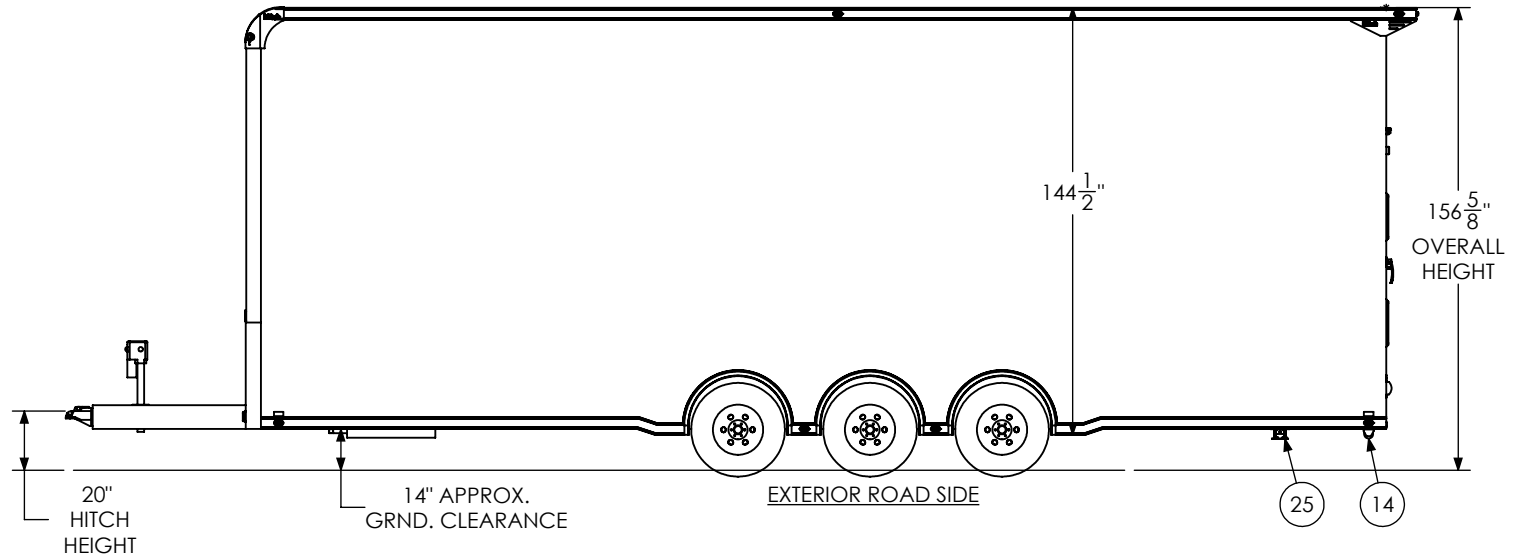
DRAWN NjM 8/20/24

ALL DIMENSIONS ARE IN INCHES AND ARE NOMINAL. DIMENSIONS ON ACTUAL TRAILER MAY VARY FROM WHAT IS SHOWN ON PRINT BASED ON ACTUAL FRAMING AND TRAILER STRUCTURE. UNLESS NOTED AS CRITICAL

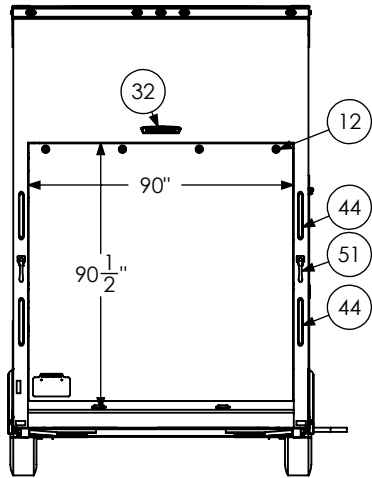
<i>inTech Trailers</i>		
inTech - Lite Stacker BSL8.5x32TTA5 - STANDARD INTERIOR FRONT		
DWG. NO. BSL8.5x32TTA Trailer Assembly - Standard	SHEET 4 OF 5	REV. E



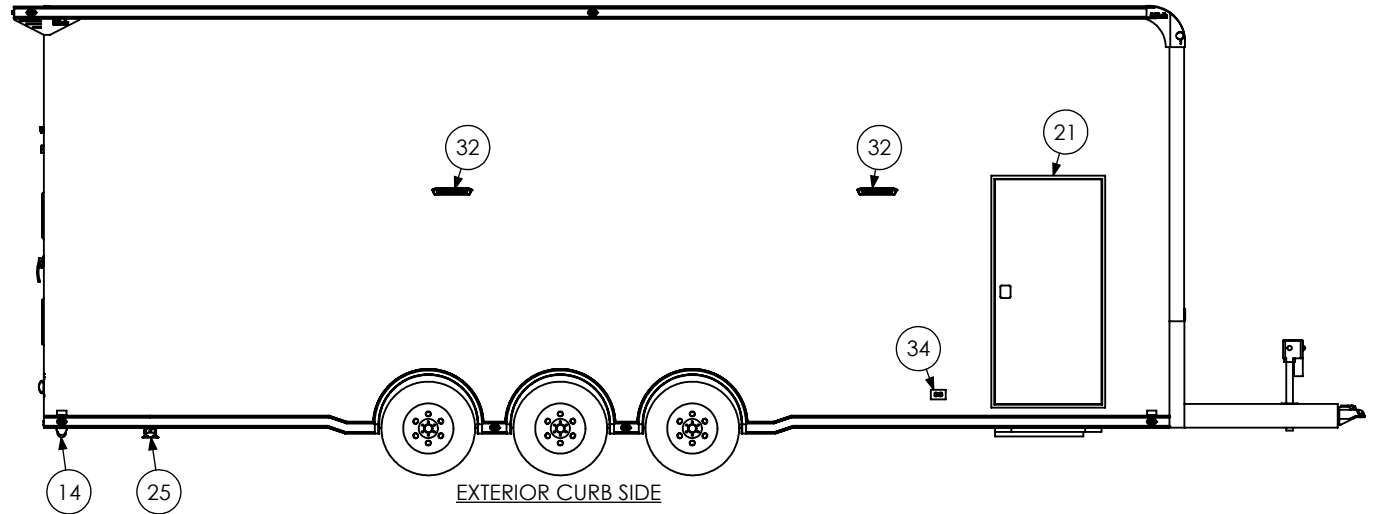
EXTERIOR FRONT



EXTERIOR ROAD SIDE



EXTERIOR REAR



EXTERIOR CURB SIDE

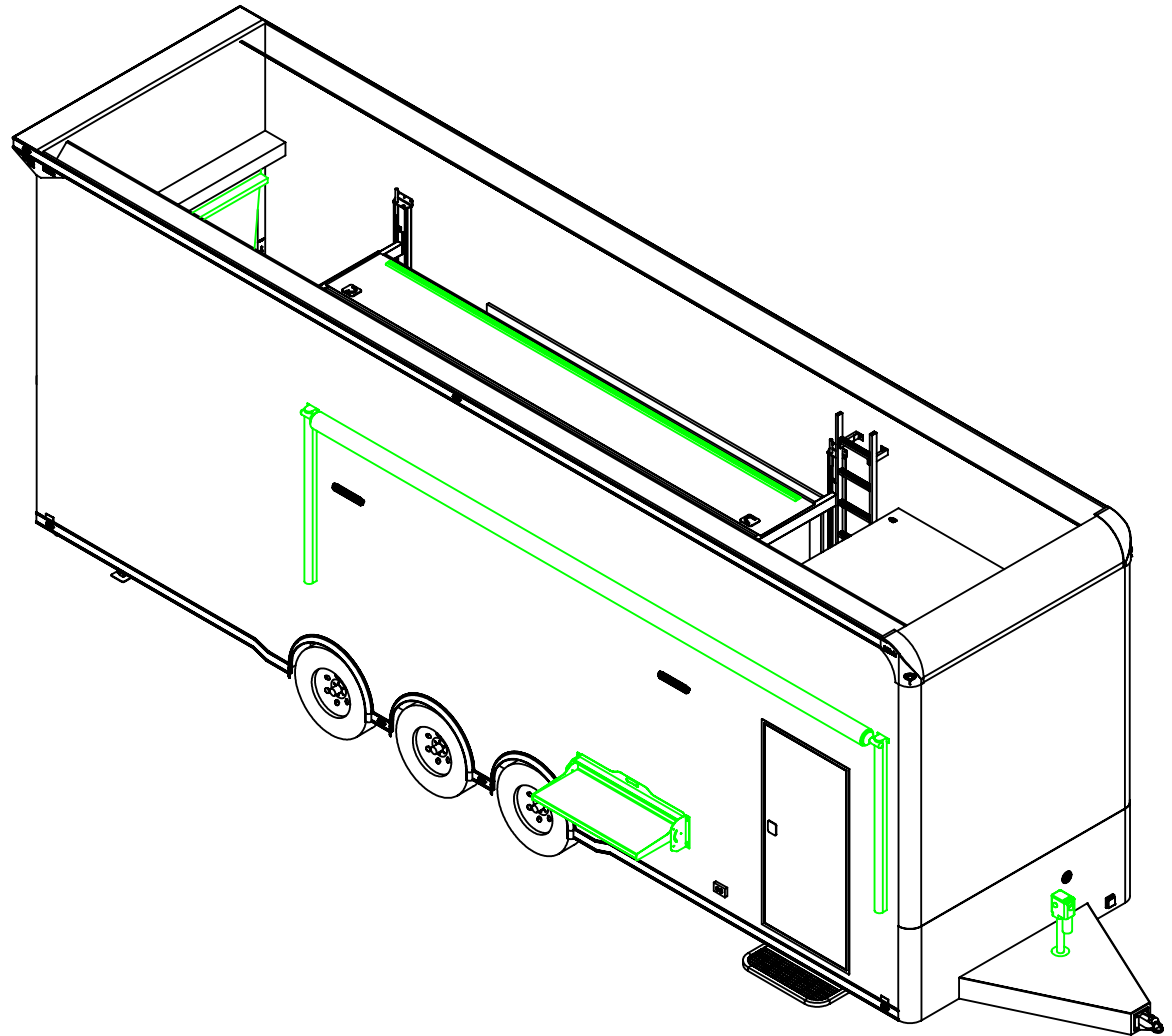
PROPRIETARY AND CONFIDENTIAL
 THE INFORMATION CONTAINED IN THIS DRAWING IS THE SOLE PROPERTY OF INTECH TRAILERS. ANY REPRODUCTION IN PART OR AS A WHOLE WITHOUT THE WRITTEN PERMISSION OF INTECH TRAILERS IS PROHIBITED.

SCALE: 1:65	NAME	DATE
DRAWN	NjM	8/20/24

ALL DIMENSIONS ARE IN INCHES AND ARE NOMINAL. DIMENSIONS ON ACTUAL TRAILER MAY VARY FROM WHAT IS SHOWN ON PRINT BASED ON ACTUAL FRAMING AND TRAILER STRUCTURE. UNLESS NOTED AS CRITICAL

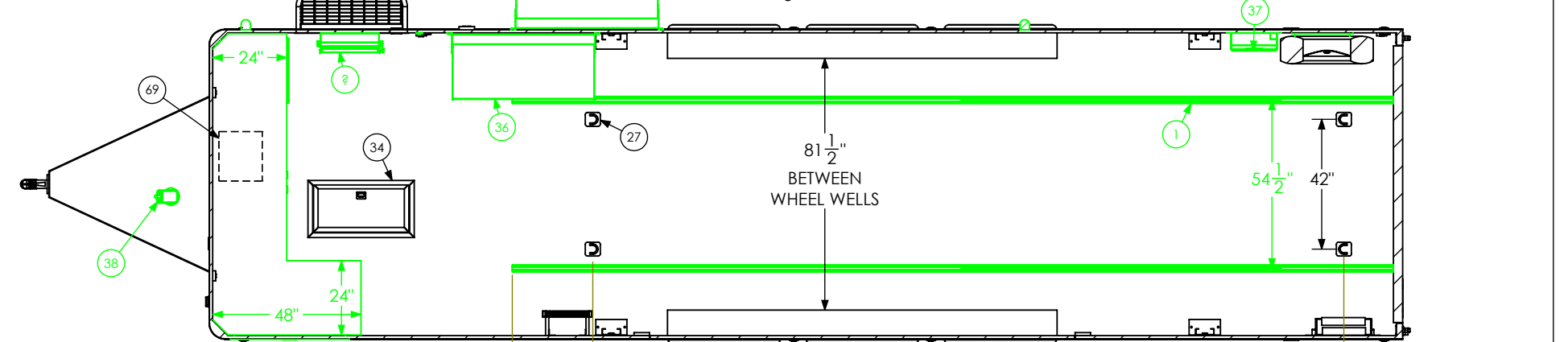
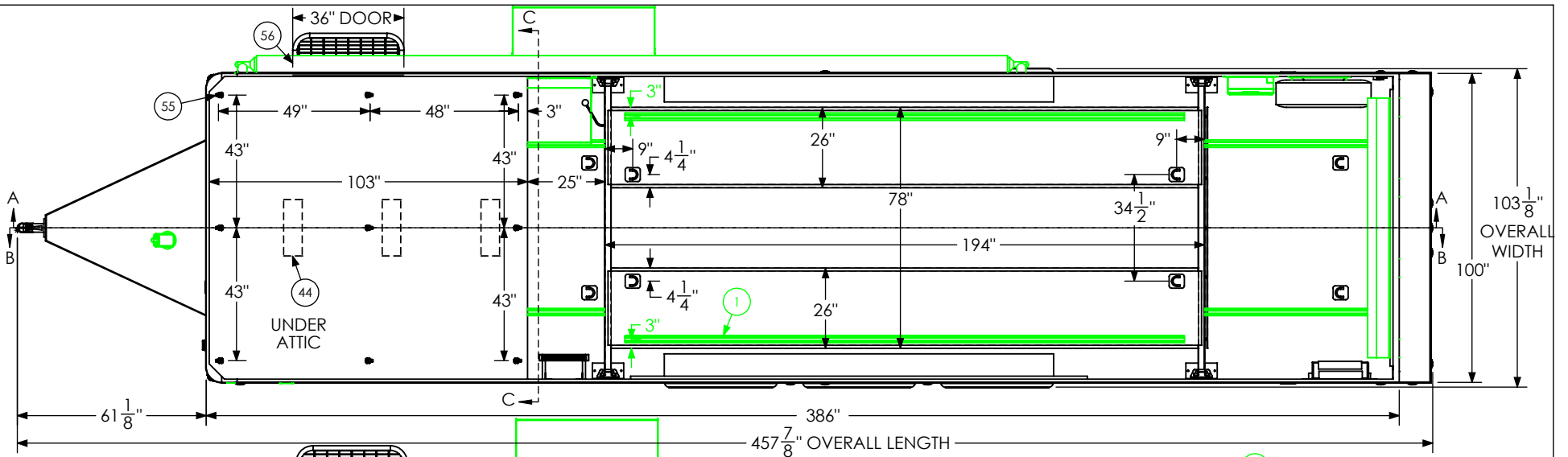
<i>inTech Trailers</i>		
inTech - Lite Stacker BSL8.5x32TTA5 - STANDARD EXTERIOR		
DWG. NO.	SHEET 5 OF 5	REV.
BSL8.5x32TTA Trailer Assembly - Standard		E

ITEM NO.	FILE NAME	DESCRIPTION	QTY
1	Airline Track		2
2	Attic - BSL		1
3	Awning	21' Power	1
4	Axle, Dexter	7000#, 22.5 UP, 93HE, 78AB T	3
5	Battery Box		1
6	Battery Vent		1
17	BSL Cabinet, L-Base		1
18	BSL Cabinet, Overhead		1
19	Bumpers	3"	1
20	Cast Corners		1
21	Caster Wheel		2
24	Coupler - Flat Nose	25K - Bulldog	1
26	Cover, Spring Assist		1
27	D-Ring	5,000	8
28	Door, Entrance	36" x 76" RHS	1
29	Door, Generator	36" x 36"	1
30	Drawer Insert	7 Drawer (inTech) 24"	1
33	Gen Slides - Lite Trailers		1
34	In-Floor Compartment - Lite	Hydraulics Box (14"x30")	1
35	Door Caddy Intech		1
36	inTech Flip Bench		2
37	Jack in the Pouch Assembly		1
38	Jack, Power	4500#	1
39	Jack, Stabilizer		2
40	Ladder - BSL	16" x 106"	1
41	LICENSE PLATE BRACKET		1
42	Lift Assembly SS -BSL	16'	1
43	Lift Ramp Storage Assembly		1
44	Light	18" 12v LED	9
45	Light, License Plate		1
46	Load Center	30 Amp L/C - 60 Amp Conv	1
47	Loading Light - LED	13.7" 12V Loading Light	3
48	Motorbase Plug	30 Amp	1
49	Outlet	120V 20 Amp	4
50	Outlet	Lift Control Plug	1
51	Paddle Latch		2
52	Ramp Extension	48" x 84"	1
55	Rope Ring		9
56	Slide Out Step	36" Wide	1
57	Spare Tire Assembly		1
58	Strap Hanger - Lite	18"	1
59	Switch	12v Cutoff	1
60	Switch	2 - 12V Switches	2
61	Switch	1 - 12V Switch	1
62	Switch	Awning Command	1
63	Tail Light	Slimline	4
64	Tire	ST235/85R16	6
65	Tongue Cover - Lite		1
69	Winch Plate		1

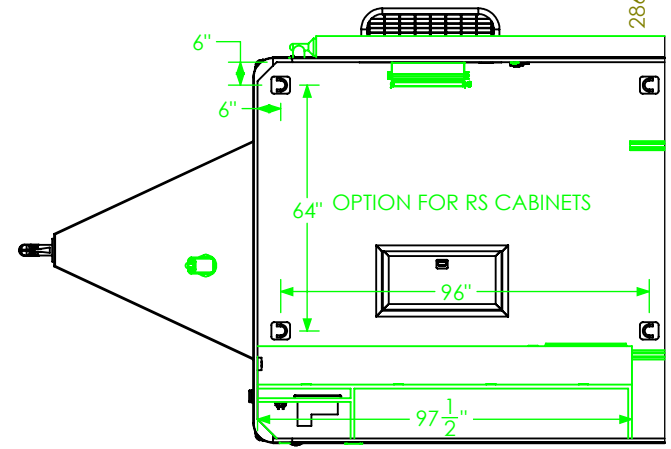


SCALE: 1:60	NAME	DATE	<i>inTech Trailers</i> inTech - Lite Stacker BSL8.5x32TTA5 OPTIONS BOM
DRAWN	NjM	9/9/24	
<small>ALL DIMENSIONS ARE IN INCHES AND ARE NOMINAL. DIMENSIONS ON ACTUAL TRAILER MAY VARY FROM WHAT IS SHOWN ON PRINT BASED ON ACTUAL FRAMING AND TRAILER STRUCTURE. UNLESS NOTED AS CRITICAL</small>			DWG. NO. SHEET 1 OF 5 REV. BSL8.5x32TTA Trailer Assembly - Option E

PROPRIETARY AND CONFIDENTIAL
 THE INFORMATION CONTAINED IN THIS DRAWING IS THE SOLE PROPERTY OF INTECH TRAILERS. ANY REPRODUCTION IN PART OR AS A WHOLE WITHOUT THE WRITTEN PERMISSION OF INTECH TRAILERS IS PROHIBITED.



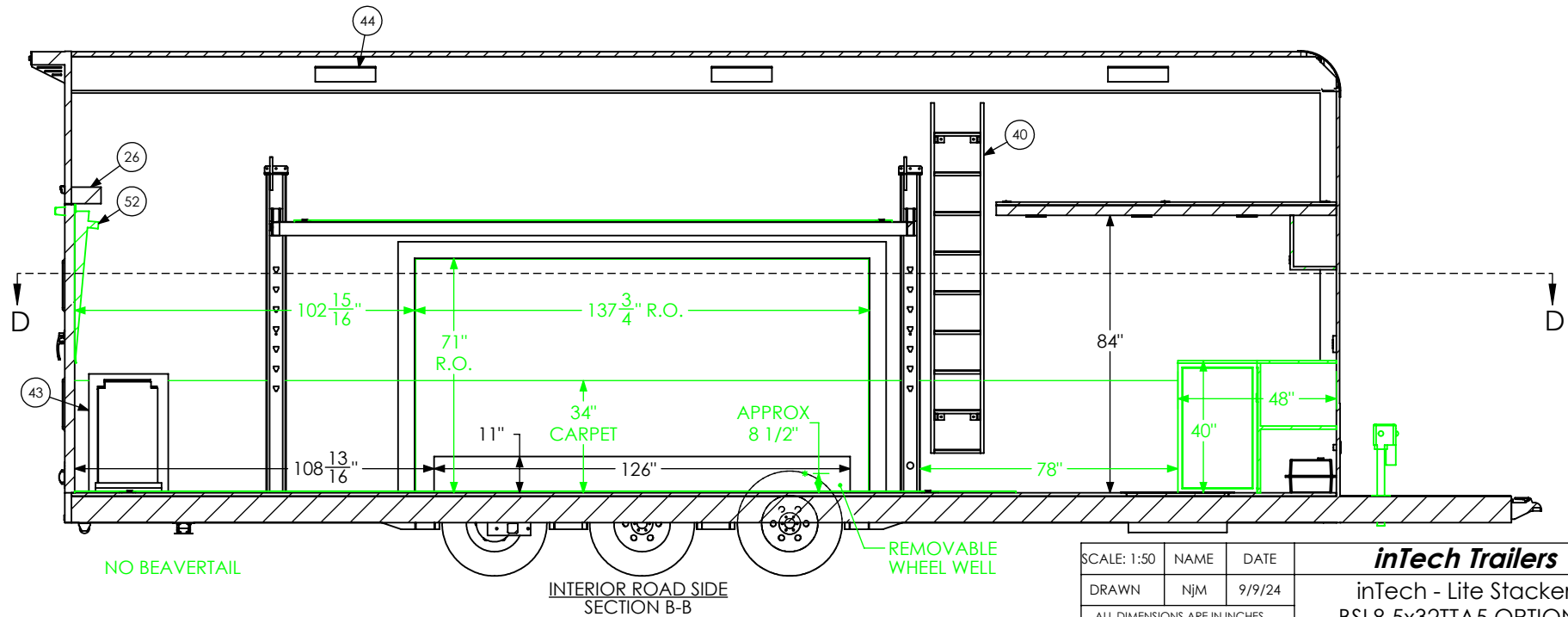
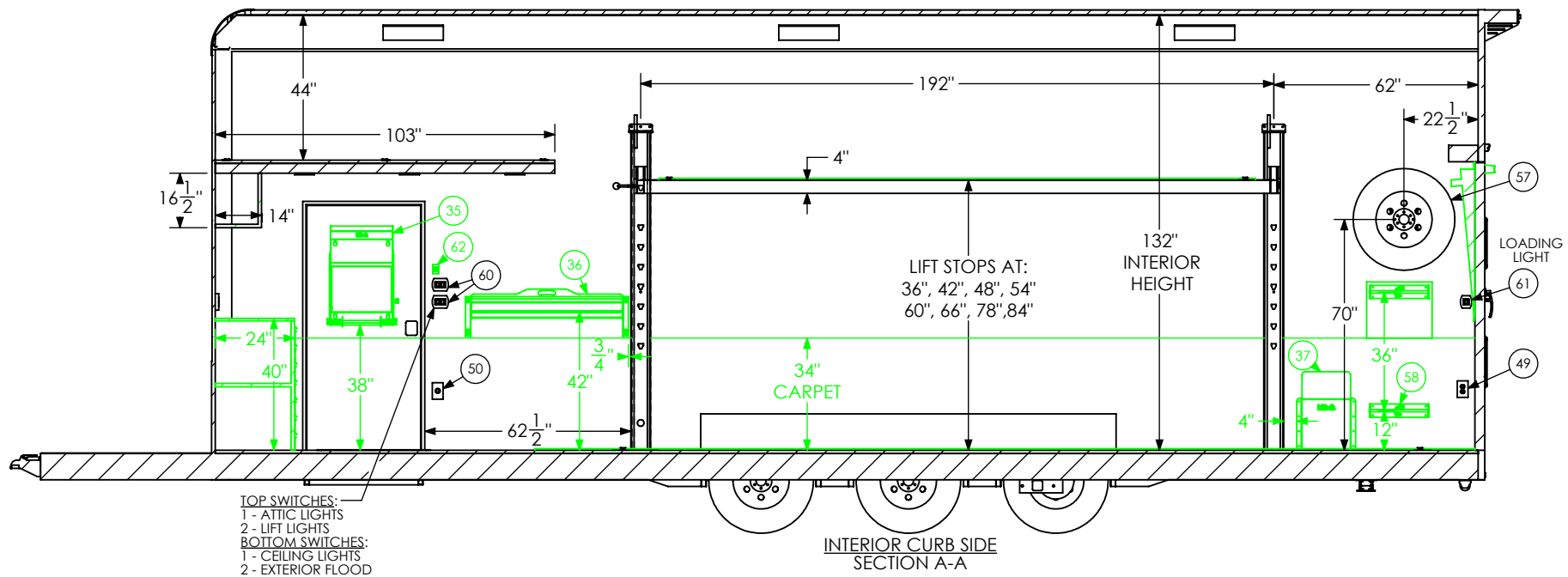
SECTION D-D



PROPRIETARY AND CONFIDENTIAL
 THE INFORMATION CONTAINED IN THIS DRAWING IS THE SOLE PROPERTY OF INTECH TRAILERS. ANY REPRODUCTION IN PART OR AS A WHOLE WITHOUT THE WRITTEN PERMISSION OF INTECH TRAILERS IS PROHIBITED.

SCALE: 1:50	NAME	DATE
DRAWN	NjM	9/9/24
ALL DIMENSIONS ARE IN INCHES AND ARE NOMINAL. DIMENSIONS ON ACTUAL TRAILER MAY VARY FROM WHAT IS SHOWN ON PRINT BASED ON ACTUAL FRAMING AND TRAILER STRUCTURE. UNLESS NOTED AS CRITICAL.		

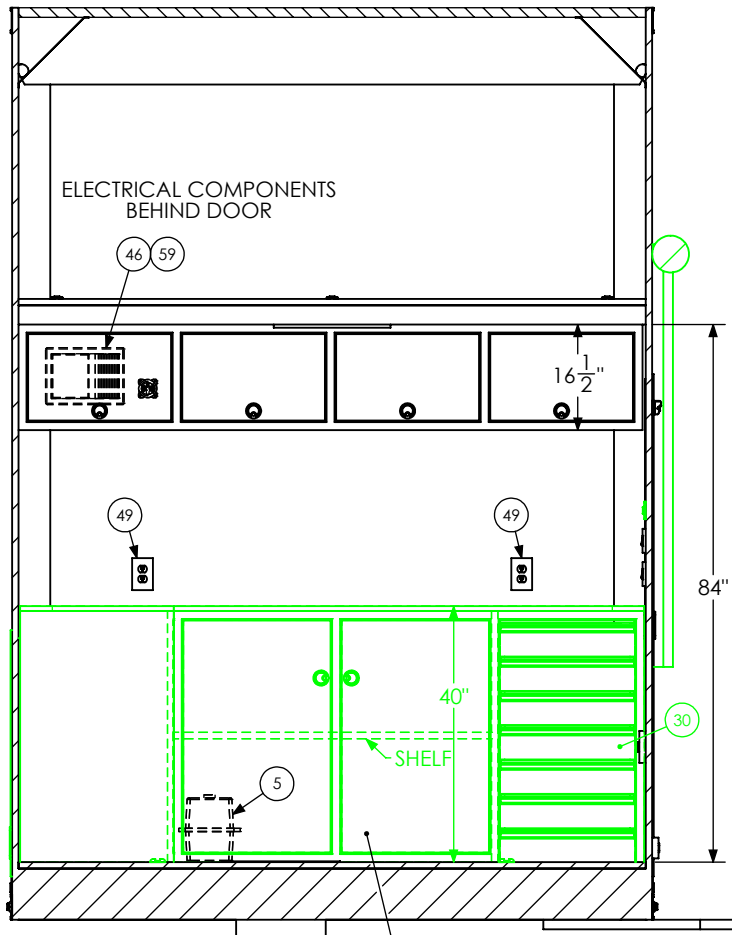
<i>inTech Trailers</i>		
inTech - Lite Stacker		
BSL8.5x32TA5 OPTIONS		
FLOORPLAN		
DWG. NO.	SHEET 2 OF 5	REV.
BSL8.5x32TA Trailer Assembly - Option		E



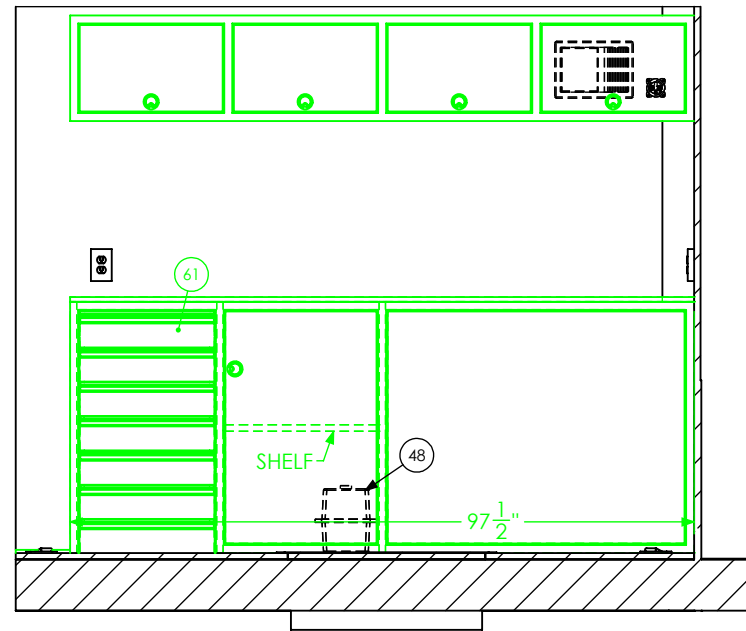
PROPRIETARY AND CONFIDENTIAL
THE INFORMATION CONTAINED IN THIS DRAWING IS THE SOLE PROPERTY OF INTECH TRAILERS. ANY REPRODUCTION IN PART OR AS A WHOLE WITHOUT THE WRITTEN PERMISSION OF INTECH TRAILERS IS PROHIBITED.

SCALE: 1:50	NAME	DATE
DRAWN	NjM	9/9/24
ALL DIMENSIONS ARE IN INCHES AND ARE NOMINAL. DIMENSIONS ON ACTUAL TRAILER MAY VARY FROM WHAT IS SHOWN ON PRINT BASED ON ACTUAL FRAMING AND TRAILER STRUCTURE. UNLESS NOTED AS CRITICAL		

inTech Trailers		
inTech - Lite Stacker BSL8.5x32TTA5 OPTIONS INTERIOR SIDES		
DWG. NO. BSL8.5x32TTA Trailer Assembly - Option	SHEET 3 OF 5	REV. E



INTERIOR FRONT SECTION C-C
WINCH PLATE IN THIS CABINET



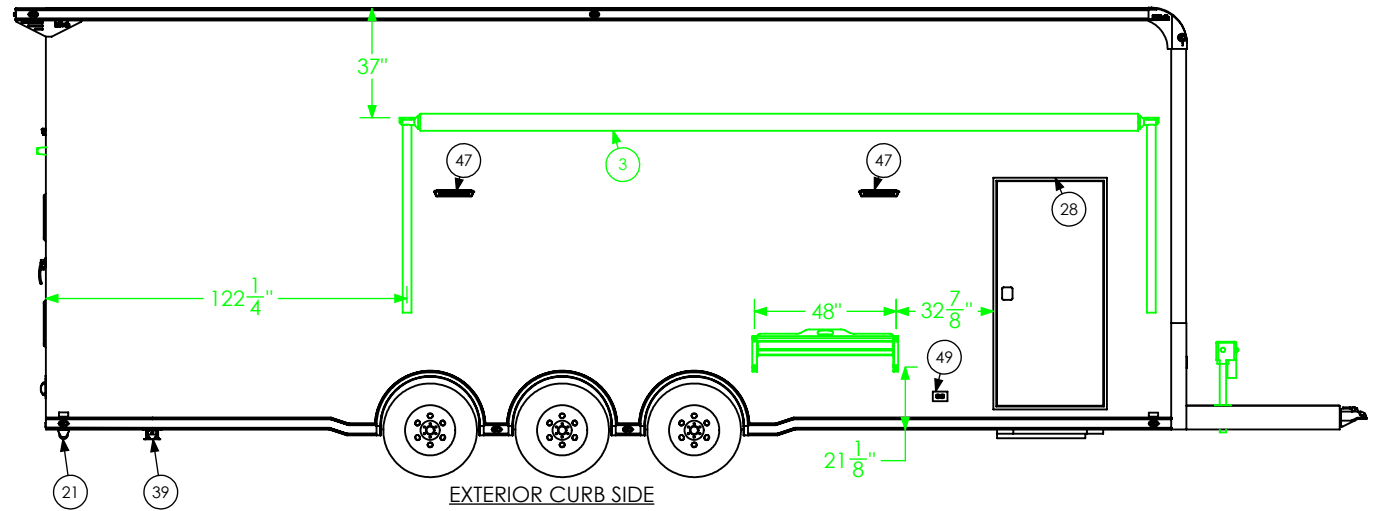
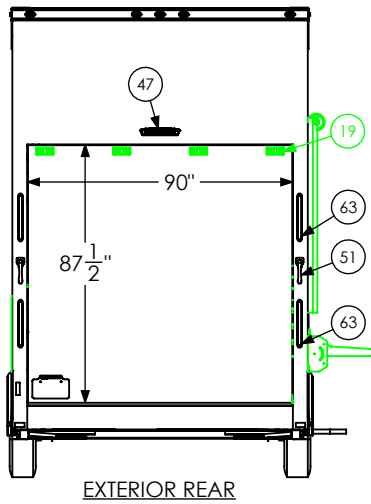
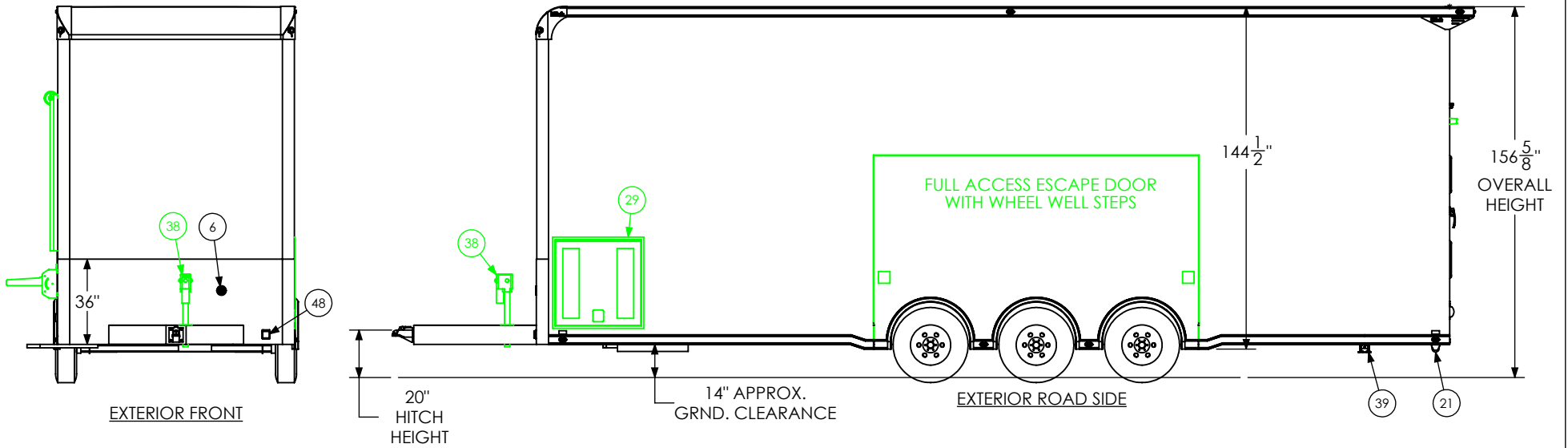
INTERIOR RS OPTION FOR RS CABINETS

SCALE: 1:30	NAME	DATE
DRAWN	NjM	9/9/24

ALL DIMENSIONS ARE IN INCHES AND ARE NOMINAL. DIMENSIONS ON ACTUAL TRAILER MAY VARY FROM WHAT IS SHOWN ON PRINT BASED ON ACTUAL FRAMING AND TRAILER STRUCTURE. UNLESS NOTED AS CRITICAL

PROPRIETARY AND CONFIDENTIAL
THE INFORMATION CONTAINED IN THIS DRAWING IS THE SOLE PROPERTY OF INTECH TRAILERS. ANY REPRODUCTION IN PART OR AS A WHOLE WITHOUT THE WRITTEN PERMISSION OF INTECH TRAILERS IS PROHIBITED.

<i>inTech Trailers</i>		
inTech - Lite Stacker BSL8.5x32TTA5 OPTIONS INTERIOR FRONT		
DWG. NO. BSL8.5x32TTA Trailer Assembly - Option	SHEET 4 OF 5	REV. E



SCALE: 1:65	NAME	DATE
DRAWN	NjM	9/9/24

ALL DIMENSIONS ARE IN INCHES AND ARE NOMINAL. DIMENSIONS ON ACTUAL TRAILER MAY VARY FROM WHAT IS SHOWN ON PRINT BASED ON ACTUAL FRAMING AND TRAILER STRUCTURE. UNLESS NOTED AS CRITICAL

PROPRIETARY AND CONFIDENTIAL
THE INFORMATION CONTAINED IN THIS DRAWING IS THE SOLE PROPERTY OF INTECH TRAILERS. ANY REPRODUCTION IN PART OR AS A WHOLE WITHOUT THE WRITTEN PERMISSION OF INTECH TRAILERS IS PROHIBITED.

<i>inTech Trailers</i>		
inTech - Lite Stacker BSL8.5x32TTA5 OPTIONS EXTERIOR		
DWG. NO. BSL8.5x32TTA Trailer Assembly - Option	SHEET 5 OF 5	REV. E