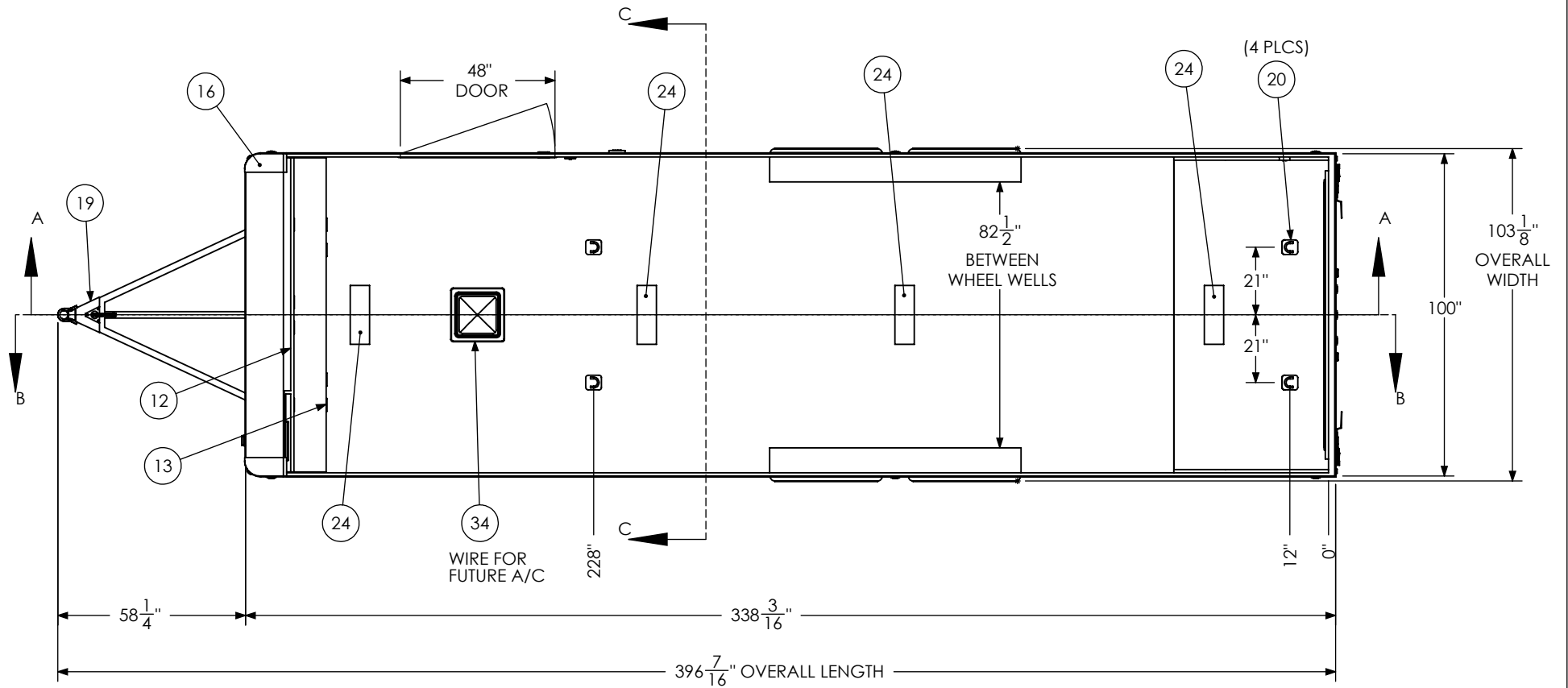


| ITEM NO. | DESCRIPTION               | NOTES                    | QTY. |
|----------|---------------------------|--------------------------|------|
| 1        | Axle, Dexter              | 5200#, 10 UP, 94HF, 78AB | 2    |
| 12       | BTL Overhead Cabinet SH   |                          | 1    |
| 13       | BTL Straight Base Cabinet |                          | 1    |
| 14       | Bar Lock -                |                          | 2    |
| 15       | Bumpers                   | 1"                       | 1    |
| 16       | Cast Corners              |                          | 1    |
| 19       | Coupler                   | 2 5/16" Ball, 14,000#    | 1    |
| 20       | D-Ring                    |                          | 4    |
| 21       | Door, Entrance            | 48" x 78" RHS            | 1    |
| 23       | Jack - Top Wind           |                          | 1    |
| 24       | LED Light                 | 18", 12V, LED            | 4    |
| 25       | Load Center               | 30 Amp L/C - 60 Amp Conv | 1    |
| 26       | Motorbase Plug            | 30 Amp                   | 1    |
| 27       | Outlet                    | 120V 20 Amp              | 4    |
| 28       | Ramp Extension            | 16" Transition Flap      | 1    |
| 31       | Switch                    | 1 - 12V Switch           | 1    |
| 33       | Tire                      | ST225/75R15              | 4    |
| 34       | Vent, Roof                |                          | 1    |

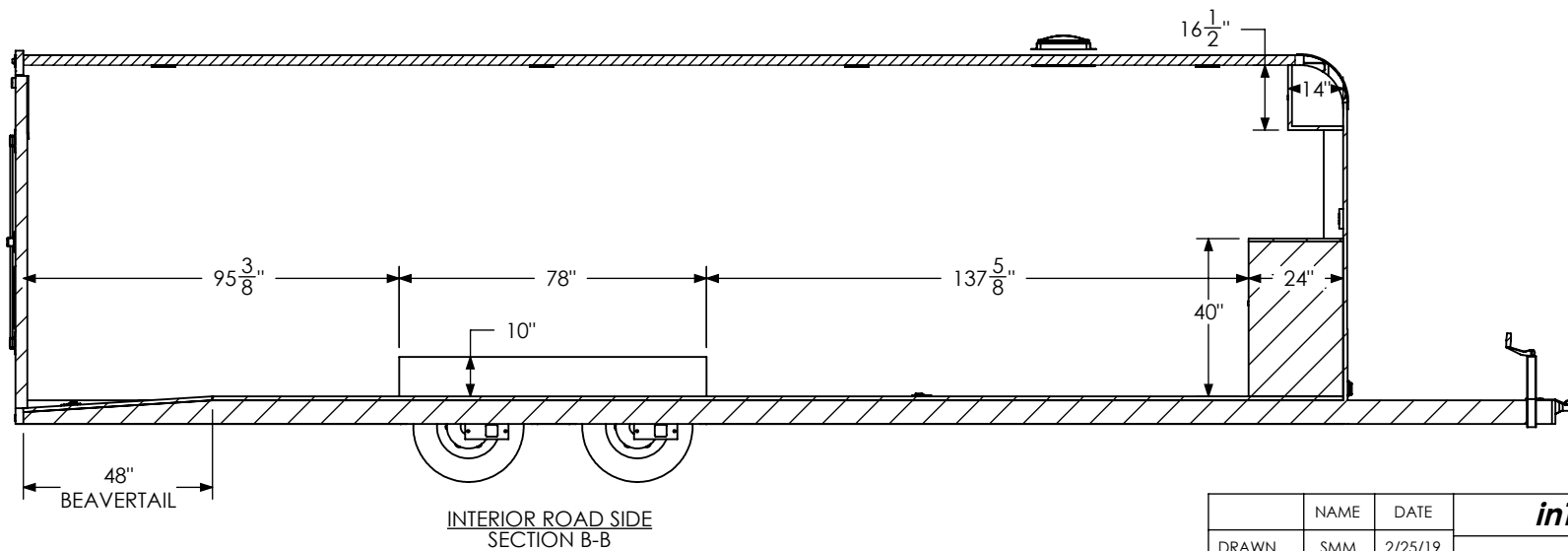
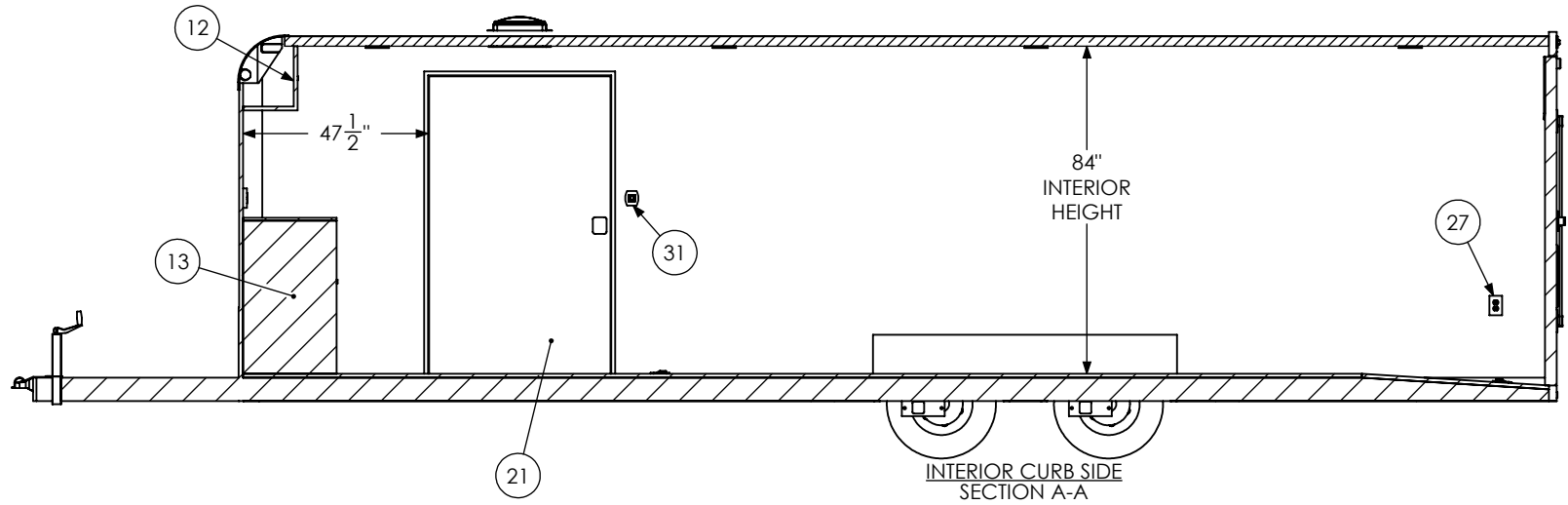
**PROPRIETARY AND CONFIDENTIAL**  
 THE INFORMATION CONTAINED IN THIS DRAWING IS THE  
 SOLE PROPERTY OF INTECH TRAILERS. ANY REPRODUCTION  
 IN PART OR AS A WHOLE WITHOUT THE WRITTEN PERMISSION  
 OF INTECH TRAILERS IS PROHIBITED.

|  | NAME | DATE    | <b><i>inTech Trailers</i></b>                                 |      |
|--|------|---------|---|------|
| DRAWN  | SMM  | 2/25/19 | <b>INTECH</b><br><b>BTL8.5x28TA3 - STANDARD</b><br><b>BOM</b> |      |
| CHECKED  |      |         |   |      |
| ENG APPR.  |      |         |   |      |
| <small>ALL DIMENSIONS ARE IN INCHES<br/>         AND ARE NOMINAL. DIMENSIONS<br/>         ON ACTUAL TRAILER MAY VARY<br/>         FROM WHAT IS SHOWN ON PRINT<br/>         BASED ON ACTUAL FRAMING AND<br/>         TRAILER STRUCTURE. UNLESS<br/>         NOTED AS CRITICAL</small> |      |         | DWG. NO.  | REV. |
|  |      |         | BTL8.5x28TA3 Trailer Assembly - Standard                      | C    |
| SCALE: 1:54  |      |         | SHEET 1 OF 5  |      |



**PROPRIETARY AND CONFIDENTIAL**  
 THE INFORMATION CONTAINED IN THIS DRAWING IS THE SOLE PROPERTY OF INTECH TRAILERS. ANY REPRODUCTION IN PART OR AS A WHOLE WITHOUT THE WRITTEN PERMISSION OF INTECH TRAILERS IS PROHIBITED.

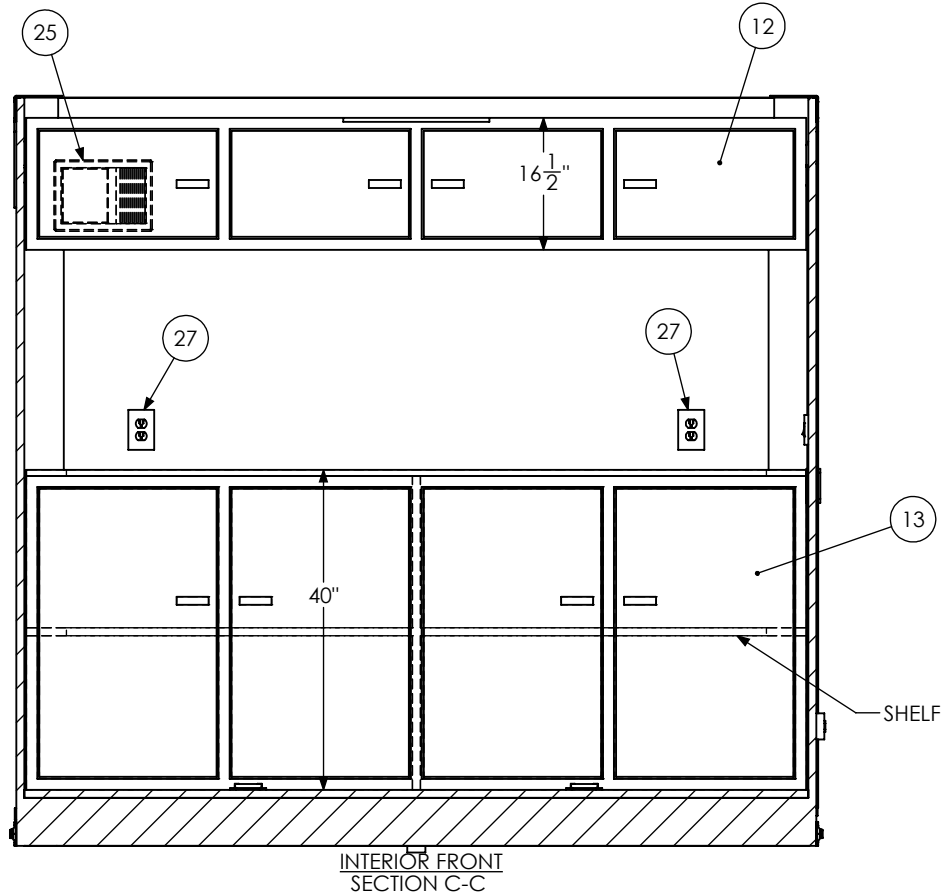
|  |      |         |   |           |
|--|------|---------|---|-----------|
|  | NAME | DATE    | <b><i>inTech Trailers</i></b><br><br>INTECH<br>BTL8.5x28TA3 - STANDARD<br>FLOORPLAN |           |
| DRAWN  | SMM  | 2/25/19 |   |           |
| CHECKED  |      |         |   |           |
| ENG APPR.  |      |         |   |           |
| ALL DIMENSIONS ARE IN INCHES AND ARE NOMINAL. DIMENSIONS ON ACTUAL TRAILER MAY VARY FROM WHAT IS SHOWN ON PRINT BASED ON ACTUAL FRAMING AND TRAILER STRUCTURE. UNLESS NOTED AS CRITICAL. |      |         | DWG. NO.<br>BTL8.5x28TA3 Trailer Assembly - Standard                                | REV.<br>C |
| SCALE: 1:48  |      |         | SHEET 2 OF 5  |           |



|  |      |         |   |              |
|--|------|---------|---|--------------|
|  | NAME | DATE    | <b>inTech Trailers</b><br><br>INTECH<br>BTL8.5x28TA3 - STANDARD<br>INTERIOR SIDES |              |
| DRAWN  | SMM  | 2/25/19 |   |              |
| CHECKED  |      |         |   |              |
| ENG APPR.  |      |         | DWG. NO.<br>BTL8.5x28TA3 Trailer Assembly - Standard                              | REV.<br>C    |
| ALL DIMENSIONS ARE IN INCHES AND ARE NOMINAL. DIMENSIONS ON ACTUAL TRAILER MAY VARY FROM WHAT IS SHOWN ON PRINT BASED ON ACTUAL FRAMING AND TRAILER STRUCTURE. UNLESS NOTED AS CRITICAL. |      |         | SCALE: 1:48   | SHEET 3 OF 5 |

**PROPRIETARY AND CONFIDENTIAL**  
THE INFORMATION CONTAINED IN THIS DRAWING IS THE SOLE PROPERTY OF INTECH TRAILERS. ANY REPRODUCTION IN PART OR AS A WHOLE WITHOUT THE WRITTEN PERMISSION OF INTECH TRAILERS IS PROHIBITED.

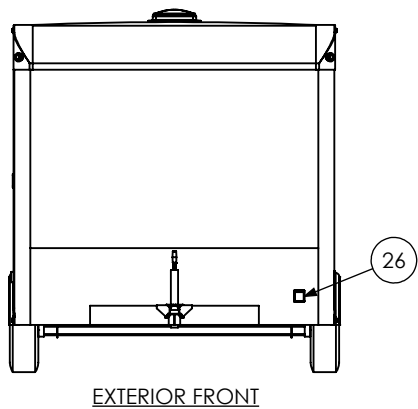
ELECTRICAL  
COMPONENTS  
INSIDE CABINET



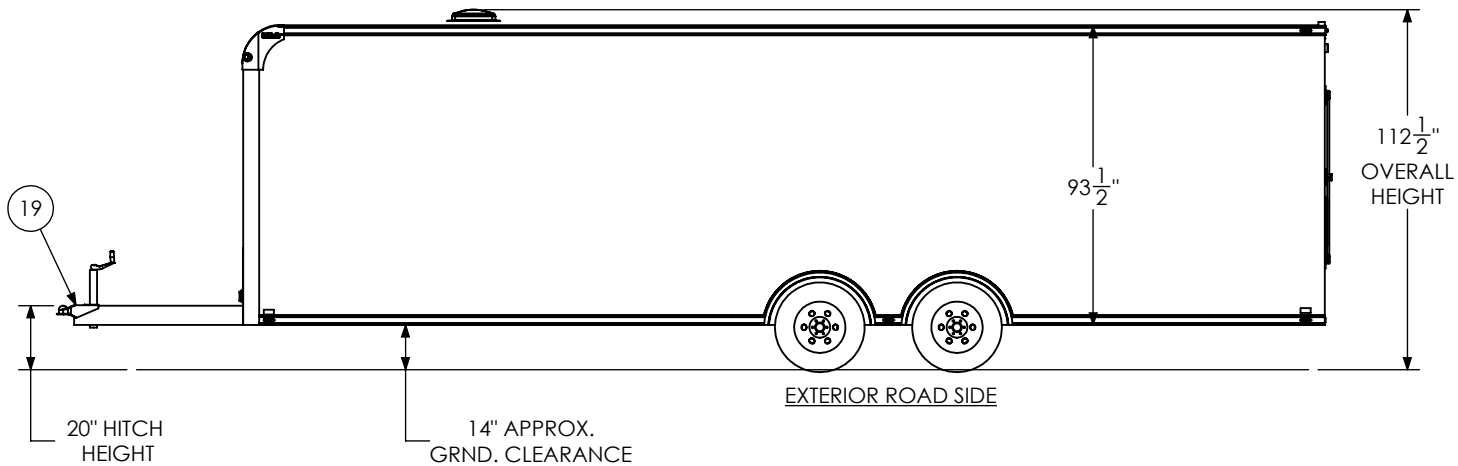
INTERIOR FRONT  
SECTION C-C

|  |      |         |  |      |
|--|------|---------|--|------|
|  | NAME | DATE    | <b><i>inTech Trailers</i></b><br><br>INTECH<br>BTL8.5x28TA3 - STANDARD<br>INTERIOR FRONT |      |
| DRAWN  | SMM  | 2/25/19 |  |      |
| CHECKED  |      |         |  |      |
| ENG APPR.  |      |         |  |      |
| <p>ALL DIMENSIONS ARE IN INCHES AND ARE NOMINAL. DIMENSIONS ON ACTUAL TRAILER MAY VARY FROM WHAT IS SHOWN ON PRINT BASED ON ACTUAL FRAMING AND TRAILER STRUCTURE. UNLESS NOTED AS CRITICAL</p> |      |         | DWG. NO.   | REV. |
|  |      |         | BTL8.5x28TA3 Trailer Assembly - Standard   | C    |
| SCALE: 1:24  |      |         | SHEET 4 OF 5   |      |

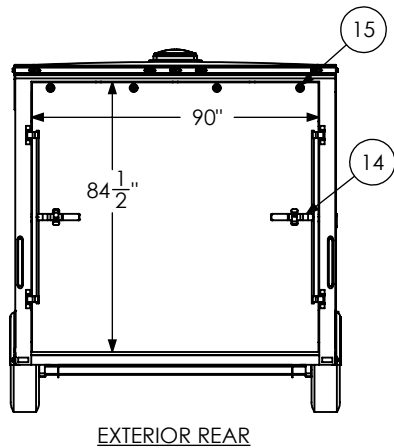
**PROPRIETARY AND CONFIDENTIAL**  
THE INFORMATION CONTAINED IN THIS DRAWING IS THE SOLE PROPERTY OF INTECH TRAILERS. ANY REPRODUCTION IN PART OR AS A WHOLE WITHOUT THE WRITTEN PERMISSION OF INTECH TRAILERS IS PROHIBITED.



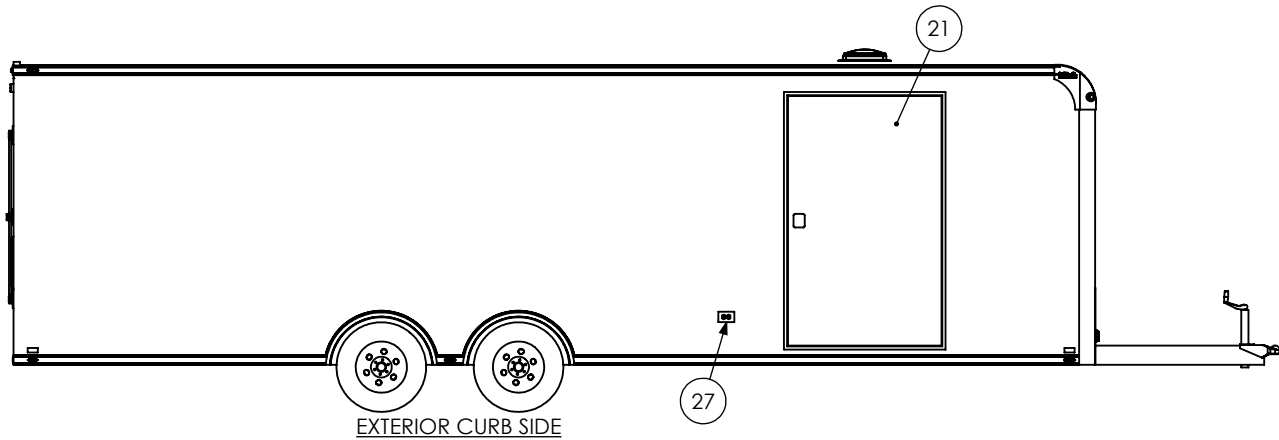
EXTERIOR FRONT



EXTERIOR ROAD SIDE



EXTERIOR REAR



EXTERIOR CURB SIDE

|   |      |         |   |              |
|---|------|---------|---|--------------|
|   | NAME | DATE    | <b>inTech Trailers</b><br><br>INTECH<br>BTL8.5x28TA3 - STANDARD<br>EXTERIOR |              |
| DRAWN   | SMM  | 2/25/19 |   |              |
| CHECKED   |      |         |   |              |
| ENG APPR.   |      |         |   |              |
| <small>ALL DIMENSIONS ARE IN INCHES AND ARE NOMINAL. DIMENSIONS ON ACTUAL TRAILER MAY VARY FROM WHAT IS SHOWN ON PRINT BASED ON ACTUAL FRAMING AND TRAILER STRUCTURE. UNLESS NOTED AS CRITICAL.</small> |      |         | DWG. NO.  | REV.         |
|   |      |         | BTL8.5x28TA3 Trailer Assembly - Standard                                    | C            |
|   |      |         | SCALE: 1:60   | SHEET 5 OF 5 |

**PROPRIETARY AND CONFIDENTIAL**  
 THE INFORMATION CONTAINED IN THIS DRAWING IS THE SOLE PROPERTY OF INTECH TRAILERS. ANY REPRODUCTION IN PART OR AS A WHOLE WITHOUT THE WRITTEN PERMISSION OF INTECH TRAILERS IS PROHIBITED.