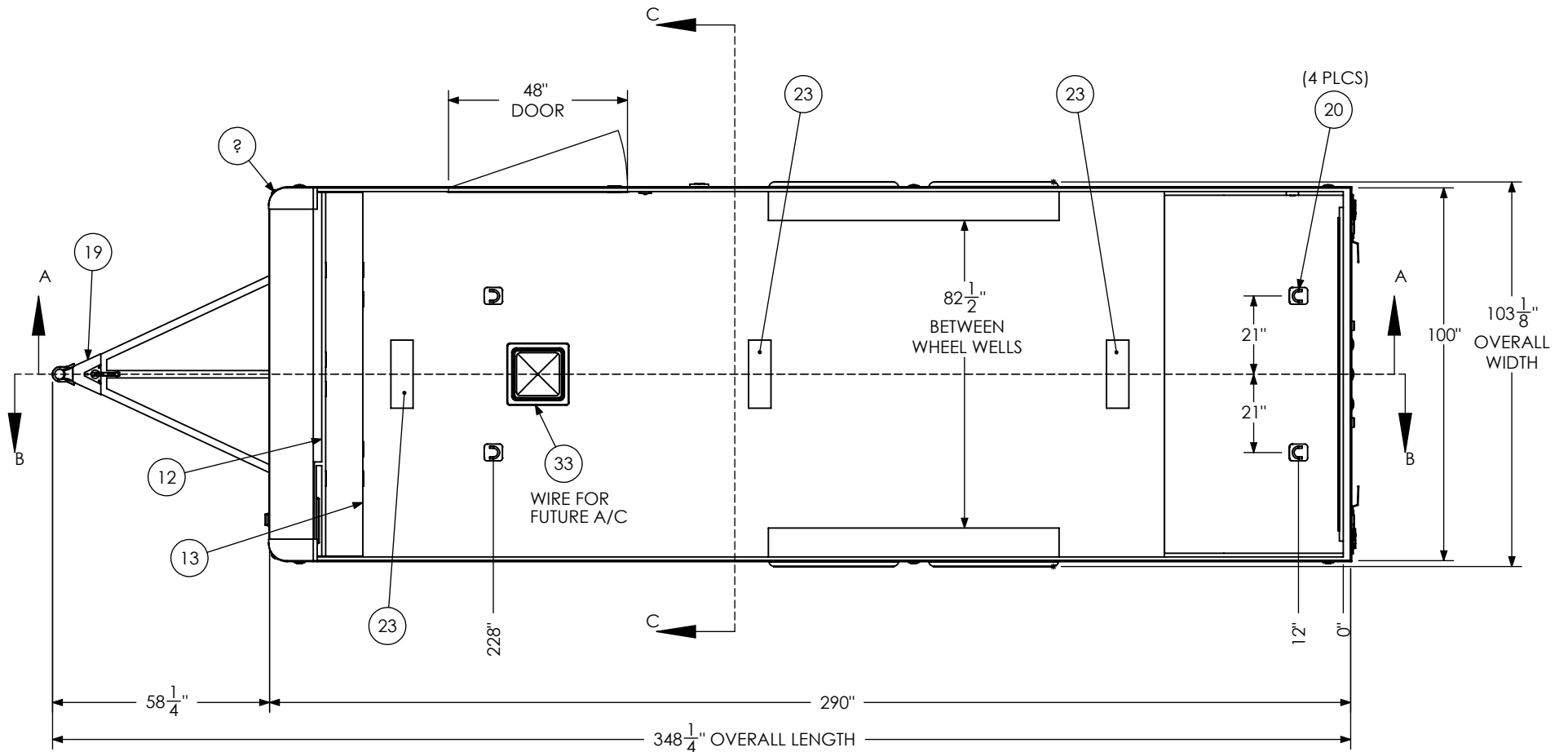


ITEM NO.	DESCRIPTION	NOTES	QTY.
1	Axle, Dexter	5200#, 10 UP, 94HF, 78AB	2
12	BTL Overhead Cabinet SH		1
13	BTL Straight Base Cabinet		1
14	Bar Lock -		2
15	Bumpers	1"	1
16	Cast Corners		1
19	Coupler	2 5/16" Ball, 14,000#	1
20	D-Ring		4
21	Door, Entrance	48" x 78" RHS	1
22	Jack - Top Wind		1
23	LED Light	18", 12V, LED	3
24	Load Center	30 Amp L/C - 60 Amp Conv	1
25	Motorbase Plug	30 Amp	1
26	Outlet	120V 20 Amp	4
27	Ramp Extension	16" Transition Flap	1
30	Switch	1 - 12V Switch	1
32	Tire	ST225/75R15	4
33	Vent, Roof		1

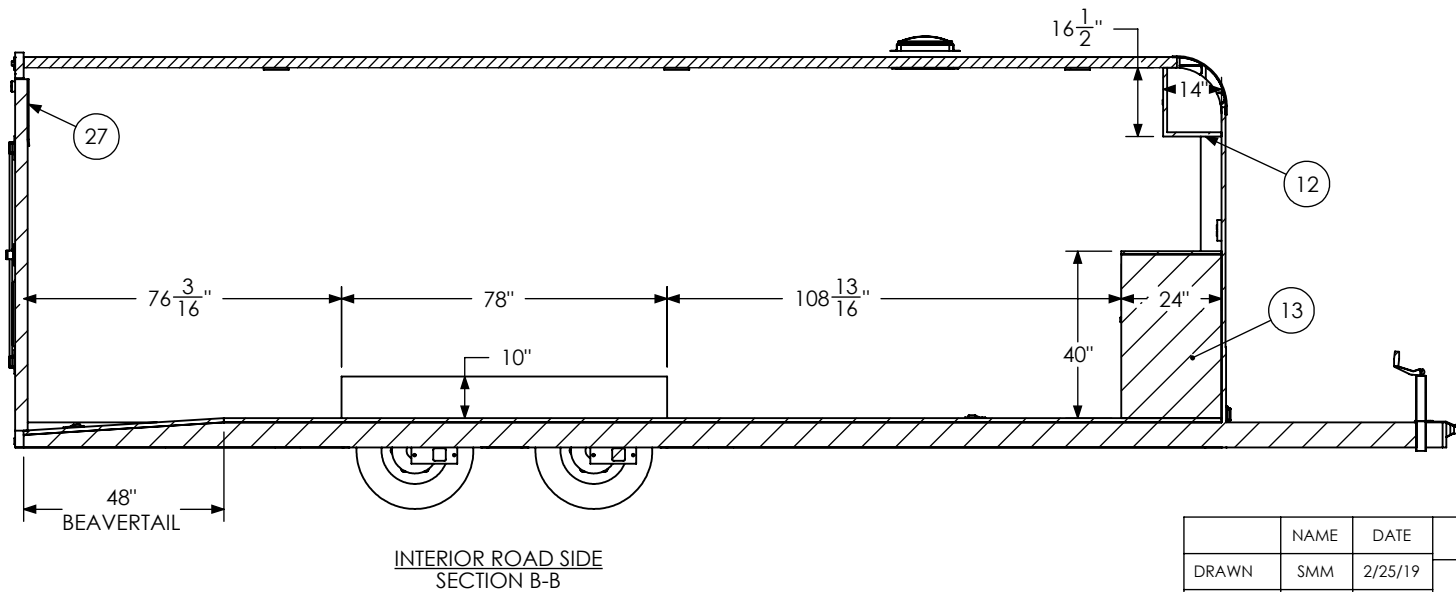
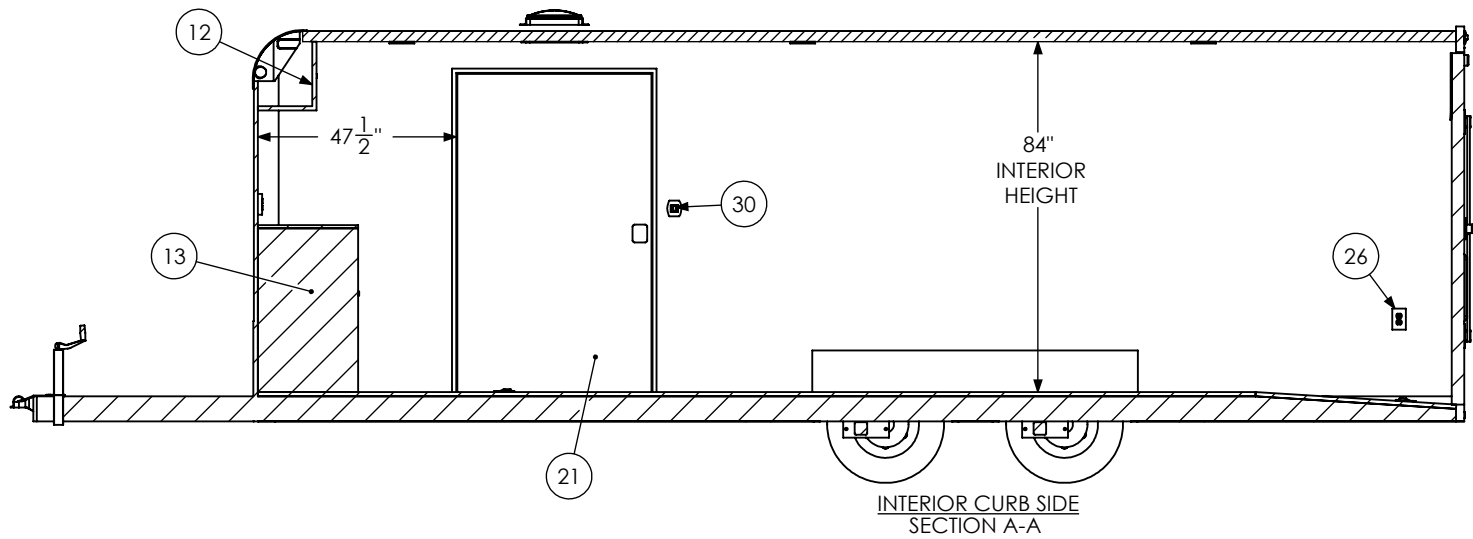
**PROPRIETARY AND CONFIDENTIAL**  
 THE INFORMATION CONTAINED IN THIS DRAWING IS THE  
 SOLE PROPERTY OF INTECH TRAILERS. ANY REPRODUCTION  
 IN PART OR AS A WHOLE WITHOUT THE WRITTEN PERMISSION  
 OF INTECH TRAILERS IS PROHIBITED.

	NAME	DATE	<b><i>inTech Trailers</i></b>	
DRAWN	SMM	2/25/19	<b>INTECH</b> <b>BTL8.5x24TA3 - STANDARD</b> <b>BOM</b>	
CHECKED				
ENG APPR.				
<small>ALL DIMENSIONS ARE IN INCHES          AND ARE NOMINAL. DIMENSIONS          ON ACTUAL TRAILER MAY VARY          FROM WHAT IS SHOWN ON PRINT          BASED ON ACTUAL FRAMING AND          TRAILER STRUCTURE. UNLESS          NOTED AS CRITICAL</small>			DWG. NO.	REV.
			BTL8.5x24TA3 Trailer Assembly - Standard	C
SCALE: 1:50			SHEET 1 OF 5	



	NAME	DATE	<b><i>inTech Trailers</i></b>	
DRAWN	SMM	2/25/19		
CHECKED			INTECH BTL8.5x24TA3 - STANDARD FLOORPLAN	
ENG APPR.				
ALL DIMENSIONS ARE IN INCHES AND ARE NOMINAL. DIMENSIONS ON ACTUAL TRAILER MAY VARY FROM WHAT IS SHOWN ON PRINT BASED ON ACTUAL FRAMING AND TRAILER STRUCTURE. UNLESS NOTED AS CRITICAL			DWG. NO.	REV.
			BTL8.5x24TA3 Trailer Assembly - Standard	C
SCALE: 1:42			SHEET 2 OF 5	

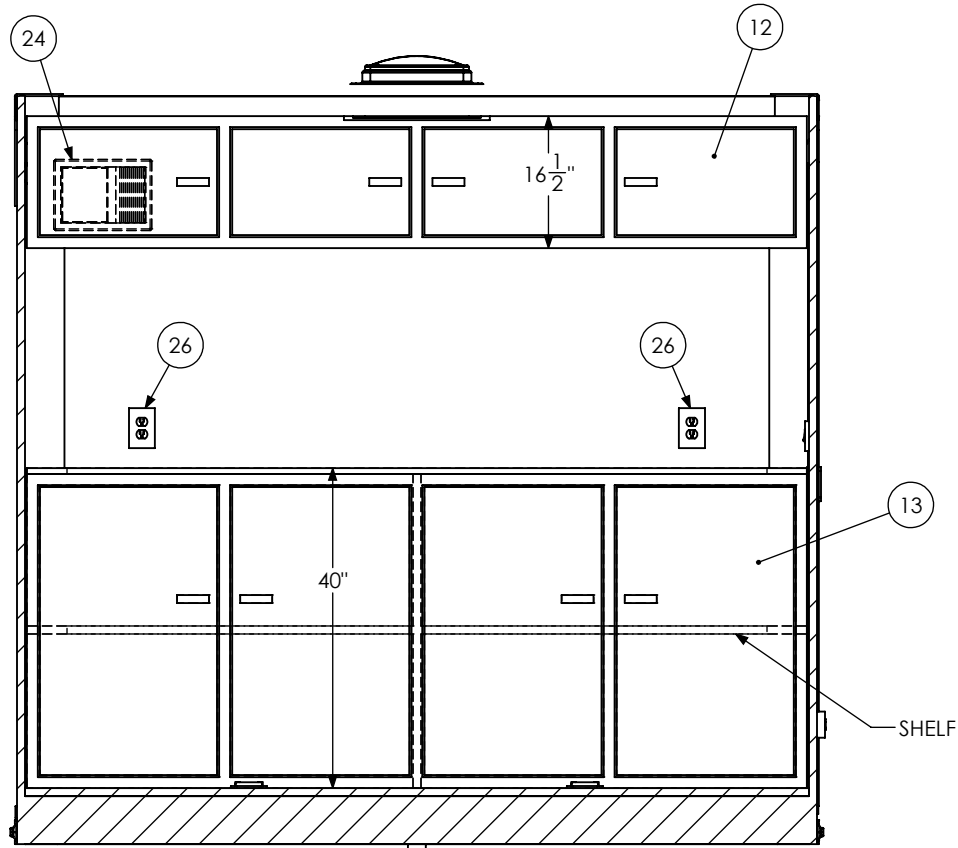
**PROPRIETARY AND CONFIDENTIAL**  
 THE INFORMATION CONTAINED IN THIS DRAWING IS THE  
 SOLE PROPERTY OF INTECH TRAILERS. ANY REPRODUCTION  
 IN PART OR AS A WHOLE WITHOUT THE WRITTEN PERMISSION  
 OF INTECH TRAILERS IS PROHIBITED.



	NAME	DATE	<b>inTech Trailers</b>  INTECH BTL8.5x24TA3 - STANDARD INTERIOR SIDES	
DRAWN	SMM	2/25/19		
CHECKED				
ENG APPR.				
<small>ALL DIMENSIONS ARE IN INCHES AND ARE NOMINAL. DIMENSIONS ON ACTUAL TRAILER MAY VARY FROM WHAT IS SHOWN ON PRINT BASED ON ACTUAL FRAMING AND TRAILER STRUCTURE. UNLESS NOTED AS CRITICAL.</small>			DWG. NO. BTL8.5x24TA3 Trailer Assembly - Standard	REV. C
			SCALE: 1:46	SHEET 3 OF 5

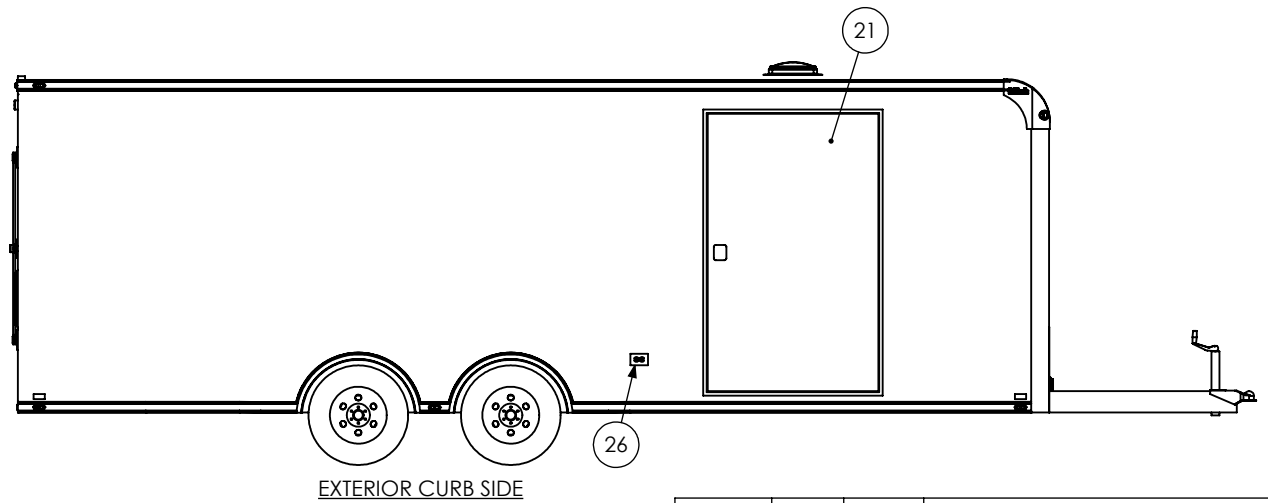
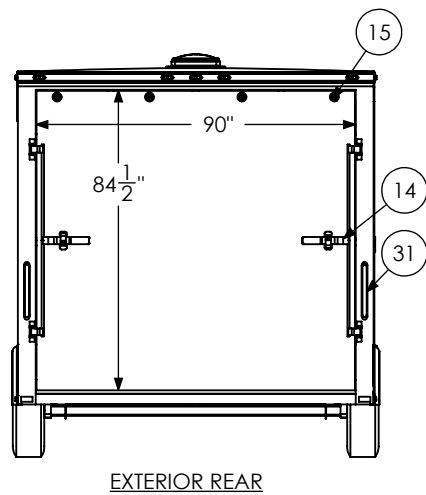
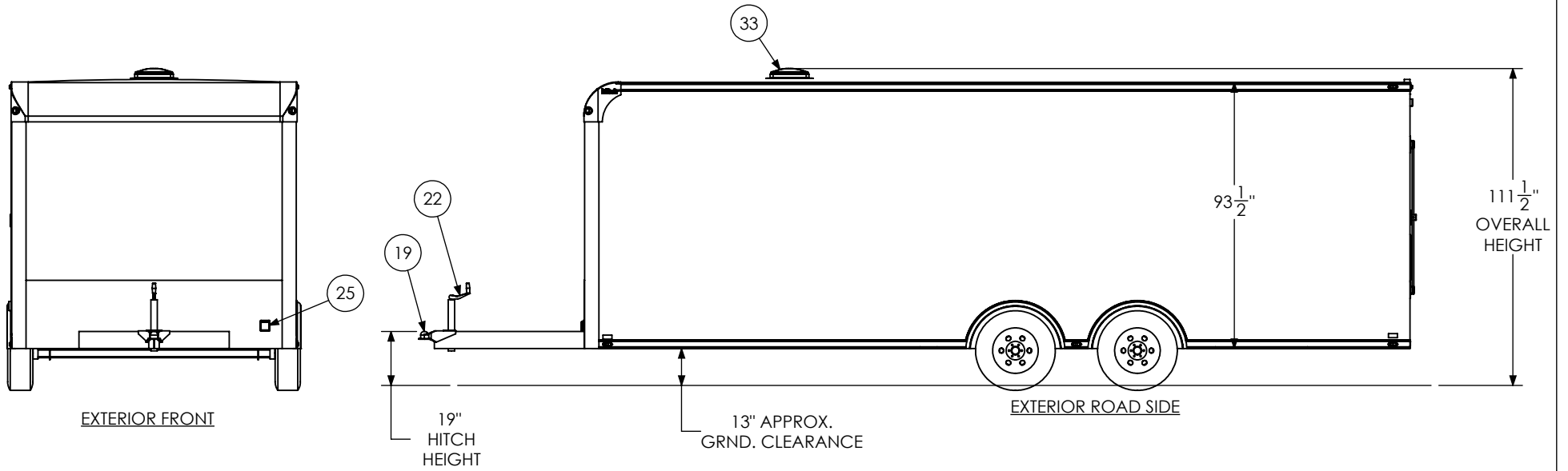
**PROPRIETARY AND CONFIDENTIAL**  
THE INFORMATION CONTAINED IN THIS DRAWING IS THE SOLE PROPERTY OF INTECH TRAILERS. ANY REPRODUCTION IN PART OR AS A WHOLE WITHOUT THE WRITTEN PERMISSION OF INTECH TRAILERS IS PROHIBITED.

ELECTRICAL COMPONENTS  
INSIDE CABINET



INTERIOR FRONT  
SECTION C-C

	NAME	DATE	<b><i>inTech Trailers</i></b>	
DRAWN	SMM	2/25/19		
CHECKED			INTECH BTL8.5x24TA3 - STANDARD INTERIOR FRONT	
ENG APPR.				
<p><b>PROPRIETARY AND CONFIDENTIAL</b> THE INFORMATION CONTAINED IN THIS DRAWING IS THE SOLE PROPERTY OF INTECH TRAILERS. ANY REPRODUCTION IN PART OR AS A WHOLE WITHOUT THE WRITTEN PERMISSION OF INTECH TRAILERS IS PROHIBITED.</p>			<p>ALL DIMENSIONS ARE IN INCHES AND ARE NOMINAL. DIMENSIONS ON ACTUAL TRAILER MAY VARY FROM WHAT IS SHOWN ON PRINT BASED ON ACTUAL FRAMING AND TRAILER STRUCTURE. UNLESS NOTED AS CRITICAL.</p>	
			DWG. NO. BTL8.5x24TA3 Trailer Assembly - Standard	REV. C
SCALE: 1:24			SHEET 4 OF 5	



	NAME	DATE	<b>inTech Trailers</b>  INTECH BTL8.5x24TA3 - STANDARD EXTERIOR	
DRAWN	SMM	2/25/19		
CHECKED				
ENG APPR.				
ALL DIMENSIONS ARE IN INCHES AND ARE NOMINAL. DIMENSIONS ON ACTUAL TRAILER MAY VARY FROM WHAT IS SHOWN ON PRINT BASED ON ACTUAL FRAMING AND TRAILER STRUCTURE. UNLESS NOTED AS CRITICAL			DWG. NO.	REV.
			BTL8.5x24TA3 Trailer Assembly - Standard	C
SCALE: 1:54			SHEET 5 OF 5	

**PROPRIETARY AND CONFIDENTIAL**  
THE INFORMATION CONTAINED IN THIS DRAWING IS THE SOLE PROPERTY OF INTECH TRAILERS. ANY REPRODUCTION IN PART OR AS A WHOLE WITHOUT THE WRITTEN PERMISSION OF INTECH TRAILERS IS PROHIBITED.