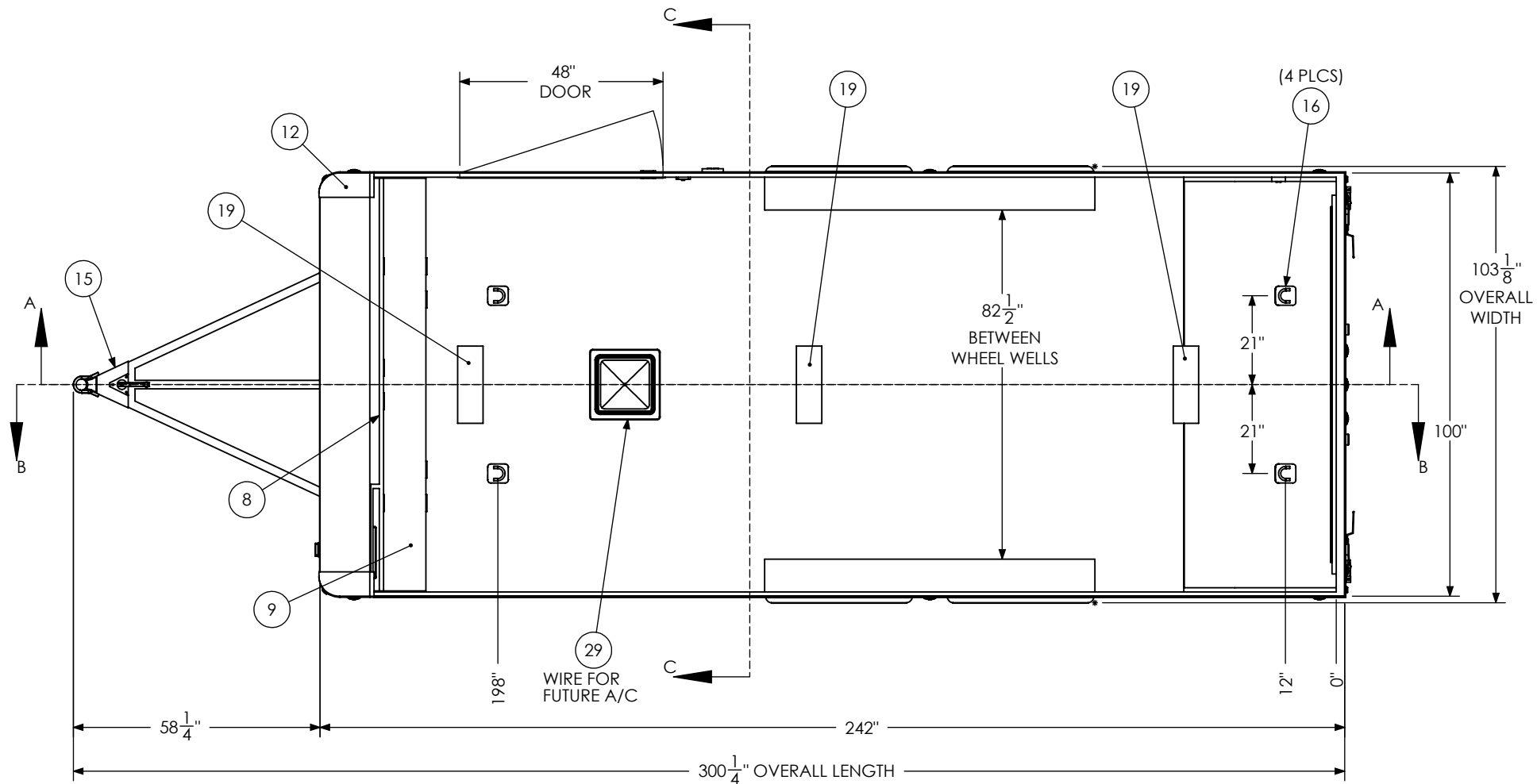


ITEM NO.	DESCRIPTION	NOTES	QTY.
1	Axle, Dexter	3500#, 0, 94HF, 78AB	2
8	BTL Overhead Cabinet SH		1
9	BTL Straight Base Cabinet		1
10	Bar Lock -		2
11	Bumpers	1"	1
12	Cast Corners		1
15	Coupler	2 5/16" Ball, 14,000#	1
16	D-Ring		4
17	Door, Entrance	48" x 78" RHS	1
18	Jack - Top Wind		1
19	LED Light	18", 12V, LED	3
20	Load Center	30 Amp L/C - 60 Amp Conv	1
21	Motorbase Plug	30 Amp	1
22	Outlet	120V 20 Amp	4
23	Ramp Extension	16" Transition Flap	1
26	Switch	1 - 12V Switch	1
28	Tire	ST205/75R15	4
29	Vent, Roof		1

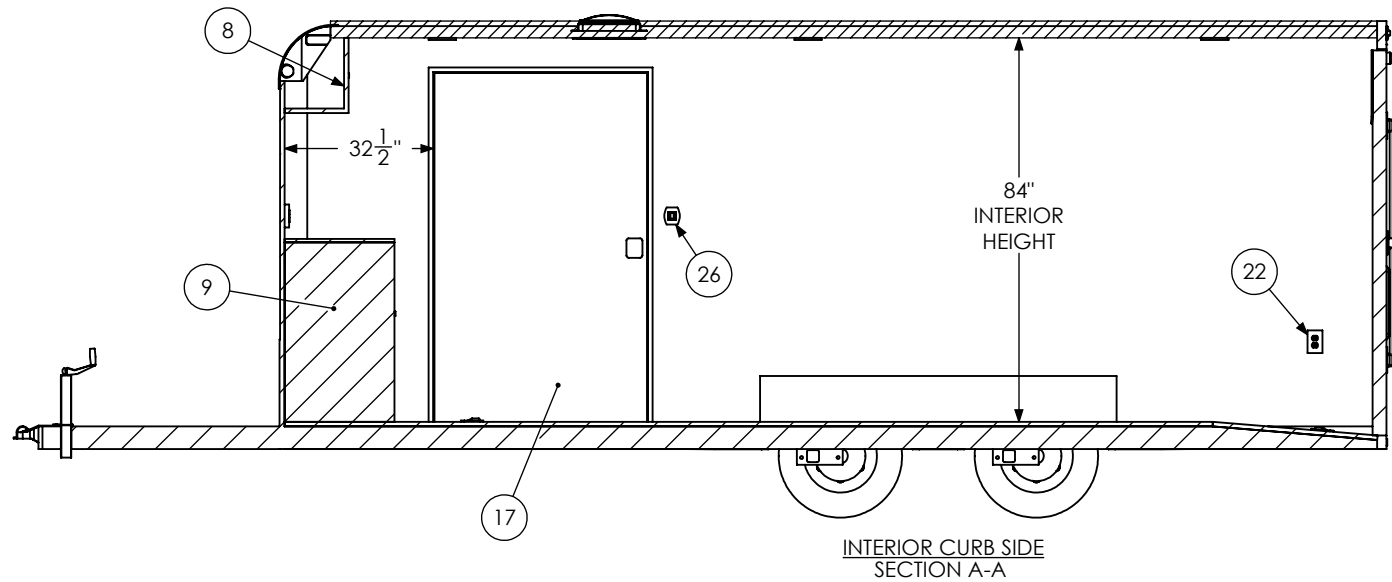
PROPRIETARY AND CONFIDENTIAL
 THE INFORMATION CONTAINED IN THIS DRAWING IS THE
 SOLE PROPERTY OF INTECH TRAILERS. ANY REPRODUCTION
 IN PART OR AS A WHOLE WITHOUT THE WRITTEN PERMISSION
 OF INTECH TRAILERS IS PROHIBITED.

	NAME	DATE	<i>inTech Trailers</i>	
DRAWN	SMM	2/25/19	INTECH BTL8.5x20TA2 - STANDARD BOM	
CHECKED				
ENG APPR.				
<small>ALL DIMENSIONS ARE IN INCHES AND ARE NOMINAL. DIMENSIONS ON ACTUAL TRAILER MAY VARY FROM WHAT IS SHOWN ON PRINT BASED ON ACTUAL FRAMING AND TRAILER STRUCTURE. UNLESS NOTED AS CRITICAL</small>			DWG. NO.	REV.
			BTL8.5x20TA2 Trailer Assembly - Standard	D
SCALE: 1:48			SHEET 1 OF 5	

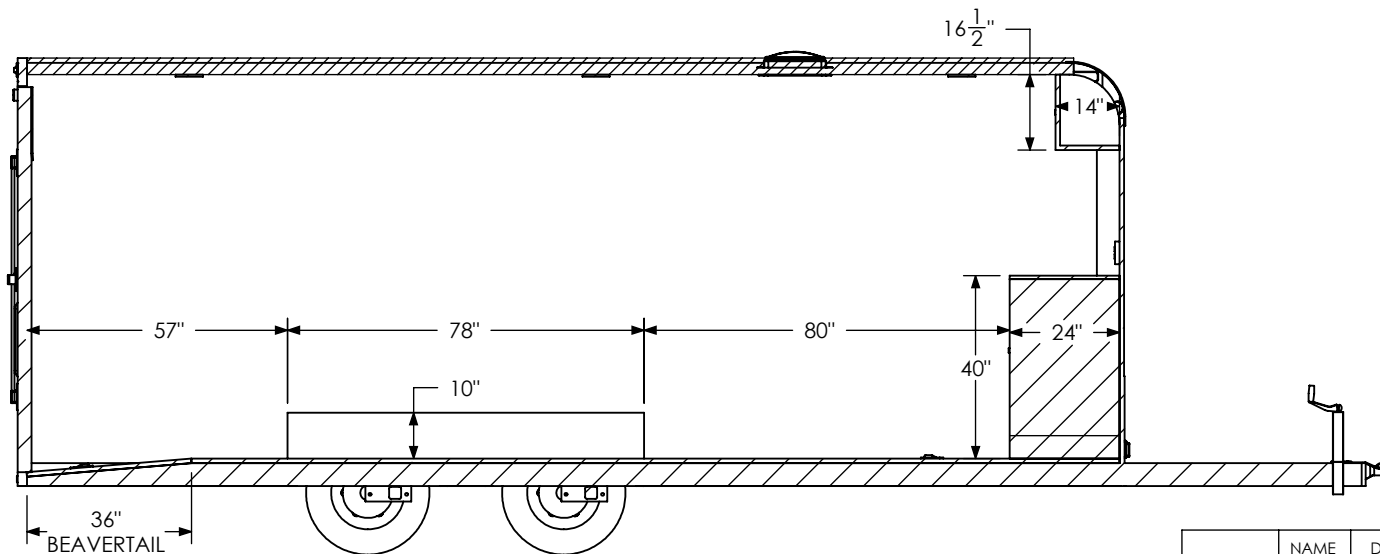


	NAME	DATE	inTech Trailers INTECH BTL8.5x20TA2 - STANDARD FLOORPLAN	
DRAWN	SMM	2/25/19		
CHECKED				
ENG APPR.				
ALL DIMENSIONS ARE IN INCHES AND ARE NOMINAL. DIMENSIONS ON ACTUAL TRAILER MAY VARY FROM WHAT IS SHOWN ON PRINT BASED ON ACTUAL FRAMING AND TRAILER STRUCTURE. UNLESS NOTED AS CRITICAL			DWG. NO. BTL8.5x20TA2 Trailer Assembly - Standard	REV. D
			SCALE: 1:36	SHEET 2 OF 5

PROPRIETARY AND CONFIDENTIAL
THE INFORMATION CONTAINED IN THIS DRAWING IS THE
SOLE PROPERTY OF INTECH TRAILERS. ANY REPRODUCTION
IN PART OR AS A WHOLE WITHOUT THE WRITTEN PERMISSION
OF INTECH TRAILERS IS PROHIBITED.



INTERIOR CURB SIDE
SECTION A-A



INTERIOR ROAD SIDE
SECTION B-B

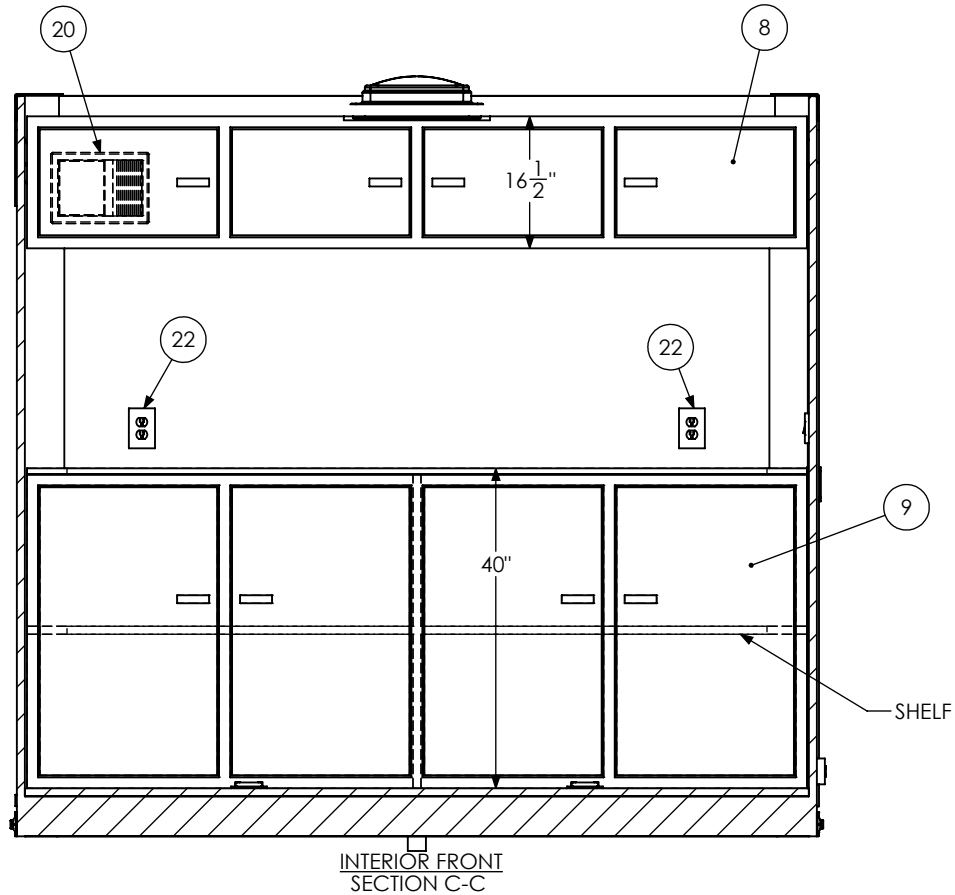
PROPRIETARY AND CONFIDENTIAL
THE INFORMATION CONTAINED IN THIS DRAWING IS THE SOLE PROPERTY OF INTECH TRAILERS. ANY REPRODUCTION IN PART OR AS A WHOLE WITHOUT THE WRITTEN PERMISSION OF INTECH TRAILERS IS PROHIBITED.

	NAME	DATE
DRAWN	SMM	2/25/19
CHECKED		
ENG APPR.		

ALL DIMENSIONS ARE IN INCHES AND ARE NOMINAL. DIMENSIONS ON ACTUAL TRAILER MAY VARY FROM WHAT IS SHOWN ON PRINT BASED ON ACTUAL FRAMING AND TRAILER STRUCTURE. UNLESS NOTED AS CRITICAL.

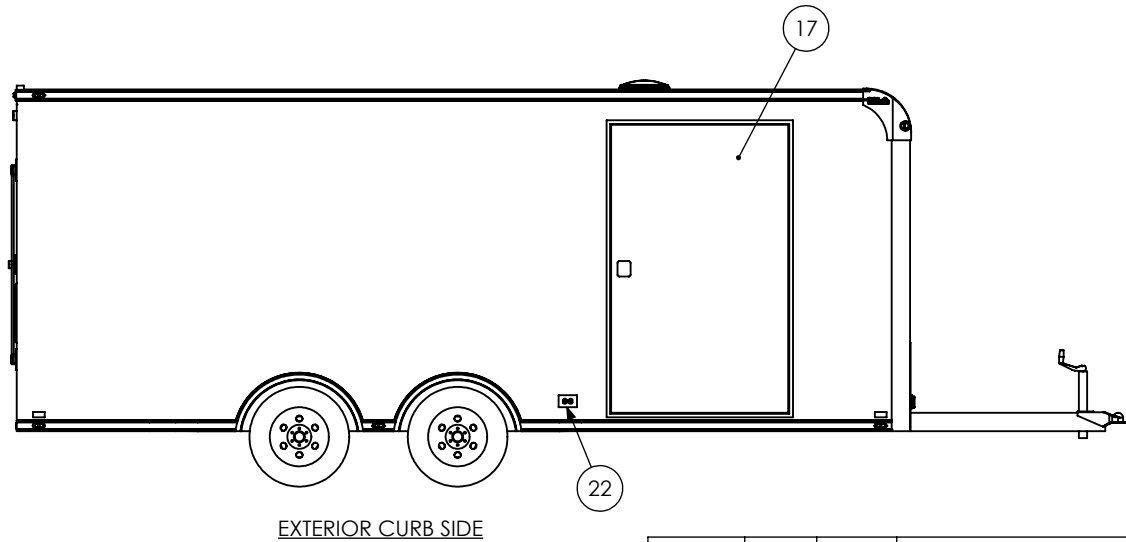
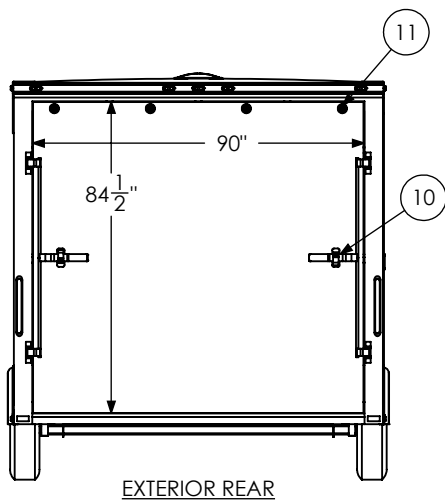
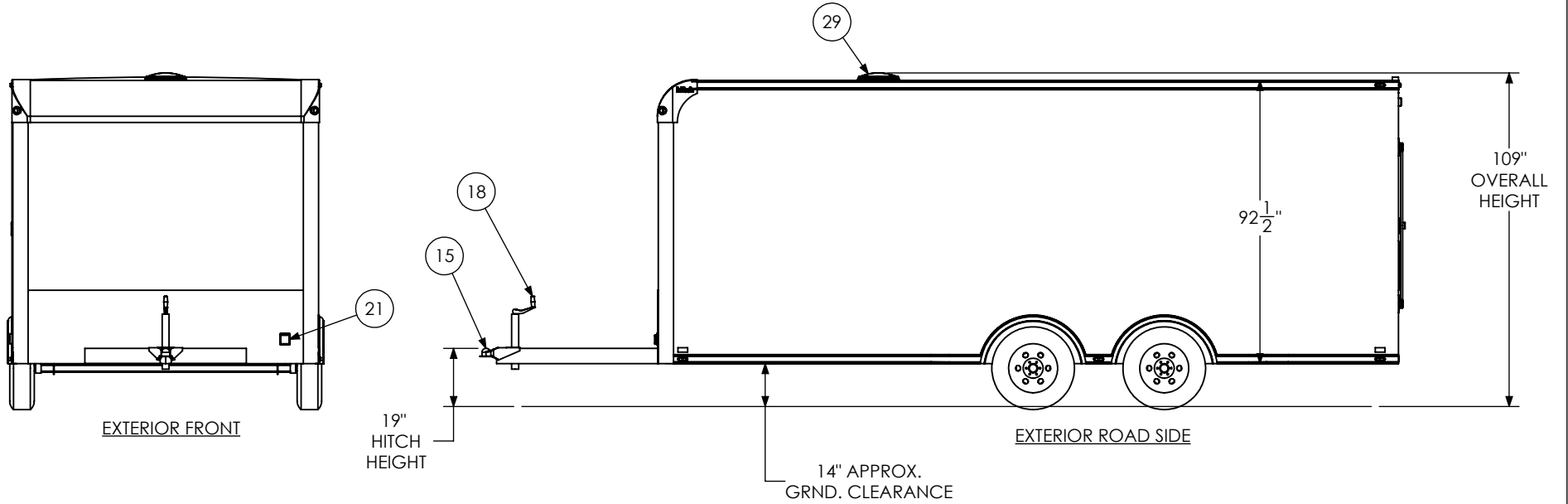
<i>inTech Trailers</i>	
INTECH BTL8.5x20TA2 - STANDARD INTERIOR SIDES	
DWG. NO. BTL8.5x20TA2 Trailer Assembly - Standard	REV. D
SCALE: 1:42	SHEET 3 OF 5

ELECTRICAL COMPONENTS
INSIDE CABINET



INTERIOR FRONT
SECTION C-C

	NAME	DATE	<i>inTech Trailers</i> INTECH BTL8.5x20TA2 - STANDARD INTERIOR FRONT	
DRAWN	SMM	2/25/19		
CHECKED				
ENG APPR.				
<p>PROPRIETARY AND CONFIDENTIAL THE INFORMATION CONTAINED IN THIS DRAWING IS THE SOLE PROPERTY OF INTECH TRAILERS. ANY REPRODUCTION IN PART OR AS A WHOLE WITHOUT THE WRITTEN PERMISSION OF INTECH TRAILERS IS PROHIBITED.</p>			<p>ALL DIMENSIONS ARE IN INCHES AND ARE NOMINAL. DIMENSIONS ON ACTUAL TRAILER MAY VARY FROM WHAT IS SHOWN ON PRINT BASED ON ACTUAL FRAMING AND TRAILER STRUCTURE. UNLESS NOTED AS CRITICAL</p>	
			<p>DWG. NO. BTL8.5x20TA2 Trailer Assembly - Standard</p>	<p>REV. D</p>
SCALE: 1:24			SHEET 4 OF 5	



	NAME	DATE	inTech Trailers INTECH BTL8.5x20TA2 - STANDARD EXTERIOR	
DRAWN	SMM	2/25/19		
CHECKED				
ENG APPR.				
ALL DIMENSIONS ARE IN INCHES AND ARE NOMINAL. DIMENSIONS ON ACTUAL TRAILER MAY VARY FROM WHAT IS SHOWN ON PRINT BASED ON ACTUAL FRAMING AND TRAILER STRUCTURE. UNLESS NOTED AS CRITICAL.			DWG. NO.	REV.
			BTL8.5x20TA2 Trailer Assembly - Standard	D
SCALE: 1:52			SHEET 5 OF 5	

PROPRIETARY AND CONFIDENTIAL
 THE INFORMATION CONTAINED IN THIS DRAWING IS THE SOLE PROPERTY OF INTECH TRAILERS. ANY REPRODUCTION IN PART OR AS A WHOLE WITHOUT THE WRITTEN PERMISSION OF INTECH TRAILERS IS PROHIBITED.