



1940 W. Market St.
PO Box 486
Nappanee, IN 46550

Congratulations!

Thank you for choosing inTech for your next trailer purchase. We look forward to building your new unit and want the process to go as smoothly as possible. In order to decrease turnaround time and increase the accuracy in your build, we would request that you look over this checklist and follow these guidelines.

Attached are some forms we use to ensure your new trailer is going to work the way that you want upon delivery without complications or modification:

Car Clearance Checklist: Fill out this form for any vehicles you will be loading into the trailer. With the car clearance checklist we can determine what length of ramps may be needed to eliminate any interference when you load a car and check escape door and wheelbox dimensions for door clearances.

Tow Vehicle Checklist: This form should be used for gooseneck trailers. This information will help us adjust the bunk height of the trailer to ensure that there will be proper clearance and adjustment of the gooseneck coupler to tow the trailer level and assure there will be no interference issues between the trailer and truck cab.

What to Look for on Prints:

Every trailer that we build is based upon a full set of custom prints detailing the locations and dimensions of your trailer including options. Once you receive your prints, you may make changes to locations and add or remove options as necessary. Please take your time to fully review the prints to ensure an accurate build and efficient final signoff.

If you would like any additional dimensions or something relocated, simply mark up your prints and contact your dealer to work through the changes. We will make the changes to the prints and return them to you for review once again. When everything is exactly as you would like it, simply initial and date each page of the prints and order and return it to your dealer. Below is a list of some items that are often overlooked or misunderstood on the prints:

Dimensions: All dimensions and locations of options listed on the print are nominal and may move slightly from what is shown on the print based on framing or other interferences during the build. If you have a **critical** dimension, please let us know and we will label it as such and make certain that we can achieve that dimension before the trailer starts in production.

Ball Height: The ball height of the trailer is listed on the prints and should be checked against your tow vehicle and hitch setup. RV's and toters may have higher ball heights. Adjustments can be made to ensure the correct coupler height if we know about it ahead of time.

If something is missing from your prints or order then it may not be built accurately.
inTech builds to signed off prints and orders and when there is a discrepancy, prints are final.

Lead Times:

Lead times are often requested at the time a new order is placed. These estimates are always given in weeks from the date of the signed off prints and order and may vary greatly depending on the number of print revisions that are requested. If a large number of units are signed off

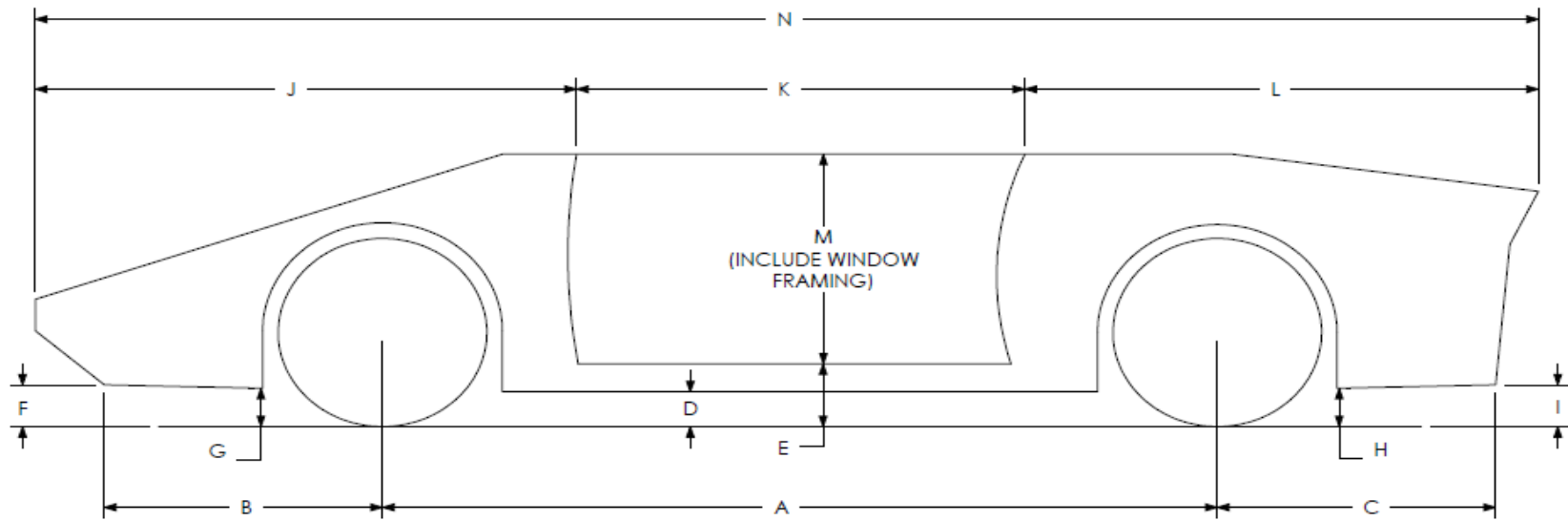


1940 W. Market St.
PO Box 486
Nappanee, IN 46550

before your unit is signed off, the estimated lead time may change. Please check back with your dealer after your unit is signed off to verify current lead times. **Lead times are approximate and are not a guarantee of delivery.**

Critical Builds Dates:

If you have a critical build date please let your dealer know as soon as possible to ensure that inTech can meet your desired timeframe. **Critical dates should always be given as manufacturing completion dates and not delivery dates.** If your dealer is arranging delivery then they will be able to help establish an accurate critical build date. We cannot control shipping and delivery timelines so we must know the date the trailer needs to be completed in production.



CUSTOMER CAR INFORMATION for Reference #

YEAR MAKE/ MODEL

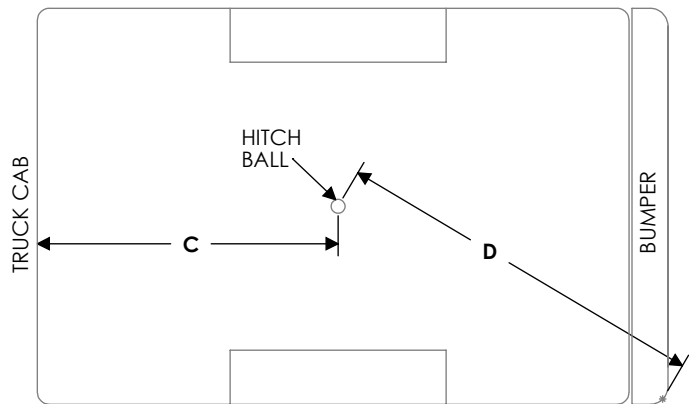
COMMENTS:

- A WHEEL BASE
 - B FRONT OVERHANG
 - C REAR OVERHANG
 - D MIDDLE GROUND CLEARANCE
 - E DOOR CLEARANCE HEIGHT
 - F EXTREME FRONT GROUND CLEARANCE
 - G EXTREME FRONT GROUND CLEARANCE
 - H REAR GROUND CLEARANCE
 - I EXTREME REAR GROUND CLEARANCE
 - J FRONT OF CAR TO CAR DOOR
 - K CAR DOOR
 - L CAR DOOR TO REAR OF CAR
 - M TOTAL HEIGHT OF CAR
 - N TOTAL LENGTH OF CAR
- TRACK WIDTH (center to center)

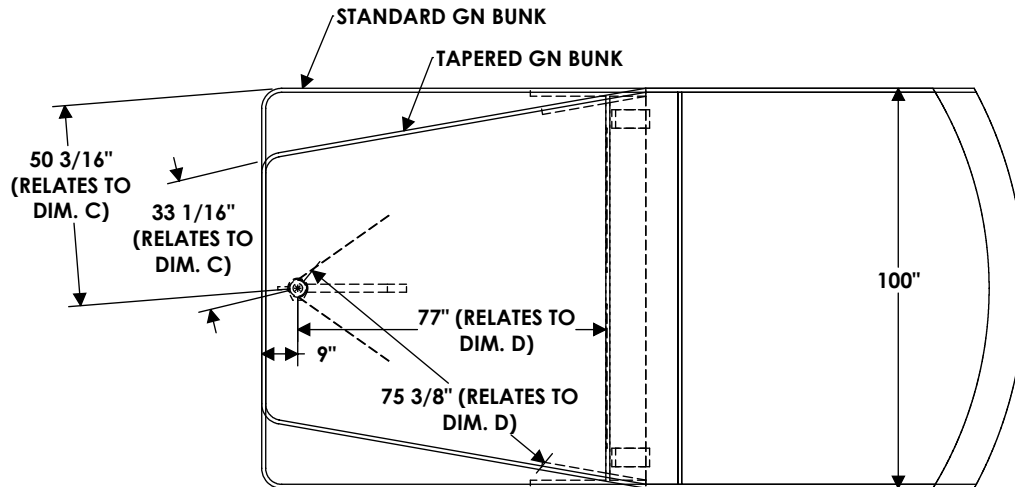
PROPRIETARY AND CONFIDENTIAL

THE INFORMATION CONTAINED IN THIS DRAWING IS THE SOLE PROPERTY OF INTECH TRAILERS. ANY REPRODUCTION IN PART OR AS A WHOLE WITHOUT THE WRITTEN PERMISSION OF INTECH TRAILERS IS PROHIBITED.

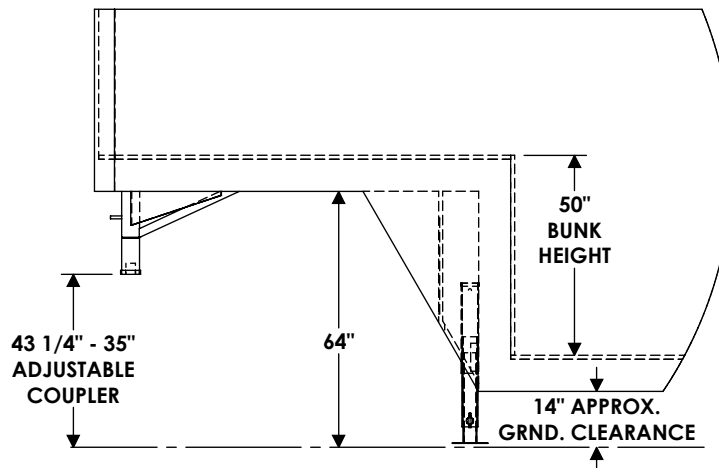
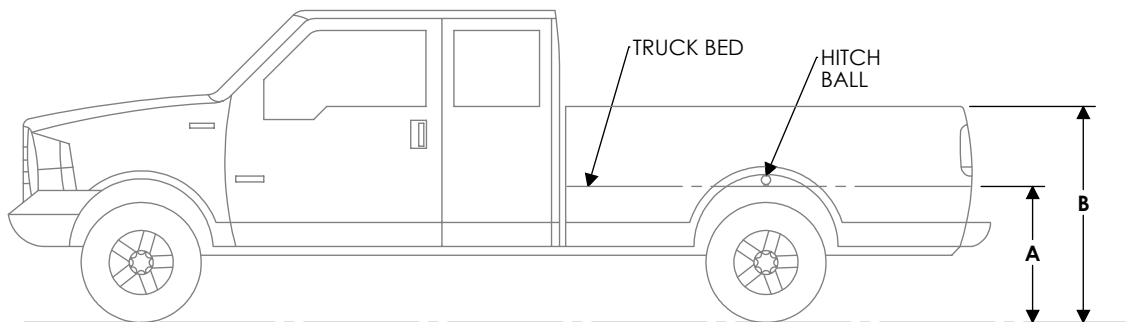
	NAME	DATE	<i>InTech Trailers</i>	
DRAWN	TGF	10/3/11	CAR HAULER CAR CLEARANCE CHECK SHEET	
CHECKED				
ENG APPR.				
DIMENSIONS ARE IN INCHES TOLERANCES: FRACTIONAL: ± 1/8" ANGULAR: ± 1° TWO PLACE DECIMAL: ± .01 THREE PLACE DECIMAL: ± .005			DWG. NO. Car Clearance	REV. D
			SCALE: 1:24	SHEET 1 OF 1



TRUCK BED



OVERHEAD VIEW OF GOOSENECK TRAILER
STANDARD CLEARANCE DIMENSIONS



SIDE VIEW OF GOOSENECK TRAILER
STANDARD CLEARANCE DIMENSIONS
(SHOWN AT THE 43 1/4\"/>

CUSTOMER TRUCK INFORMATION:

- A - MEASURED HEIGHT FROM GROUND TO BOTTOM OF HITCH BALL IN BED OF TRUCK
- B - MEASURED HEIGHT FROM GROUND TO TOP OF TRUCK BED RAILS
- C - MEASURED DISTANCE FROM CENTER OF HITCH BALL TO BACK OF TRUCK CAB (WINDOWS)
- D - MEASURED DISTANCE FROM CENTER OF HITCH BALL TO FURTHEST CORNER OF TRUCK (BUMPER)

PROPRIETARY AND CONFIDENTIAL
THE INFORMATION CONTAINED IN THIS DRAWING IS THE SOLE PROPERTY OF INTECH TRAILERS. ANY REPRODUCTION IN PART OR AS A WHOLE WITHOUT THE WRITTEN PERMISSION OF INTECH TRAILERS IS PROHIBITED.

DIMENSIONS ARE IN INCHES
TOLERANCES:
FRACTIONAL $\pm 1/8"$
ANGULAR: $\pm 1^\circ$
TWO PLACE DECIMAL $\pm .01$
THREE PLACE DECIMAL $\pm .005$

	NAME	DATE	InTech Trailers	
DRAWN	TGF	6/10/14		
CHECKED			GOOSENECK TRUCK CLEARANCE CHECK SHEET	
ENG APPR.				
DIMENSIONS ARE IN INCHES TOLERANCES: FRACTIONAL $\pm 1/8"$ ANGULAR: $\pm 1^\circ$ TWO PLACE DECIMAL $\pm .01$ THREE PLACE DECIMAL $\pm .005$				
DWG. NO.		Truck Clearance	REV.	D
SCALE: 1:48		SHEET 1 OF 1		