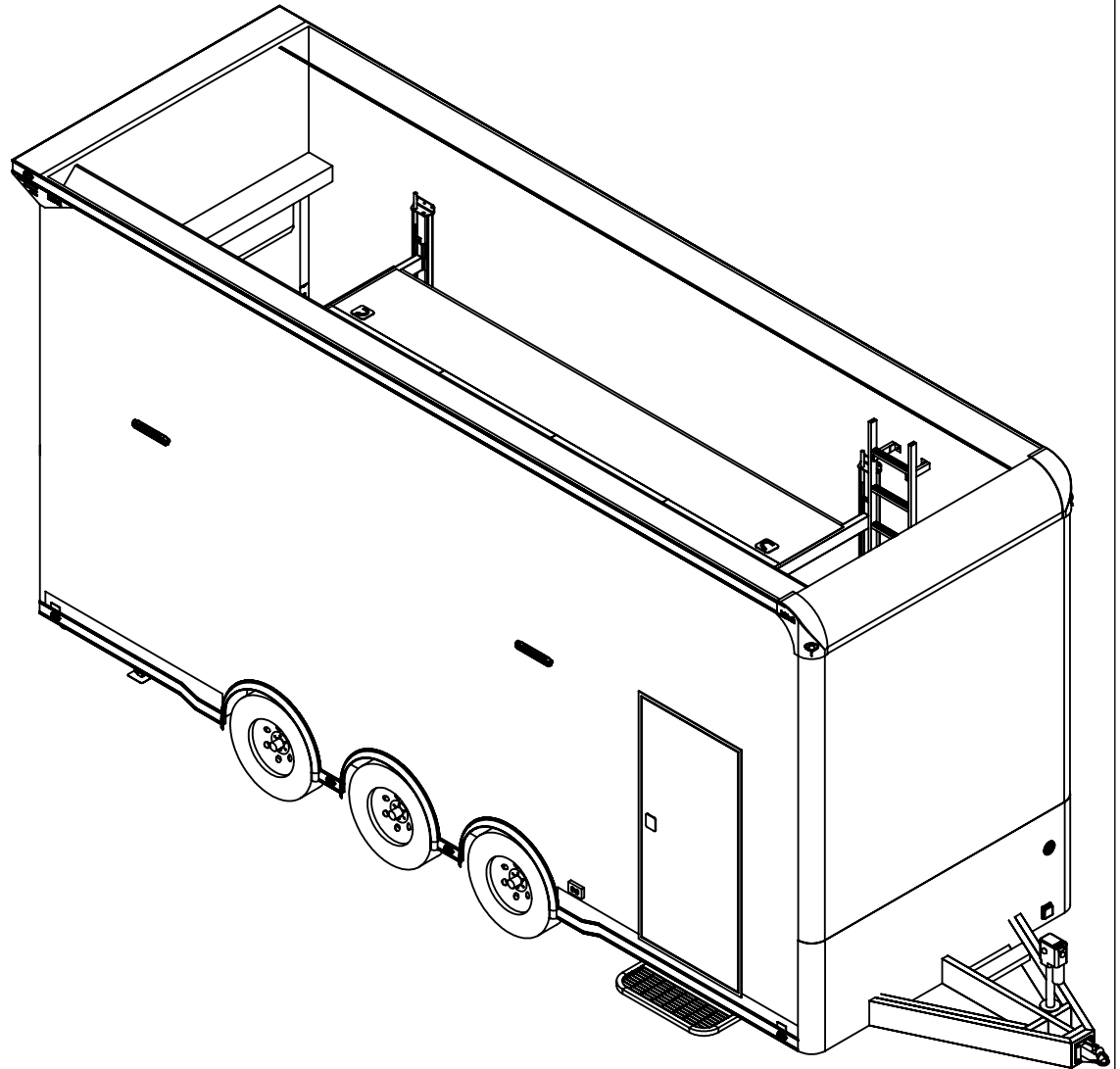
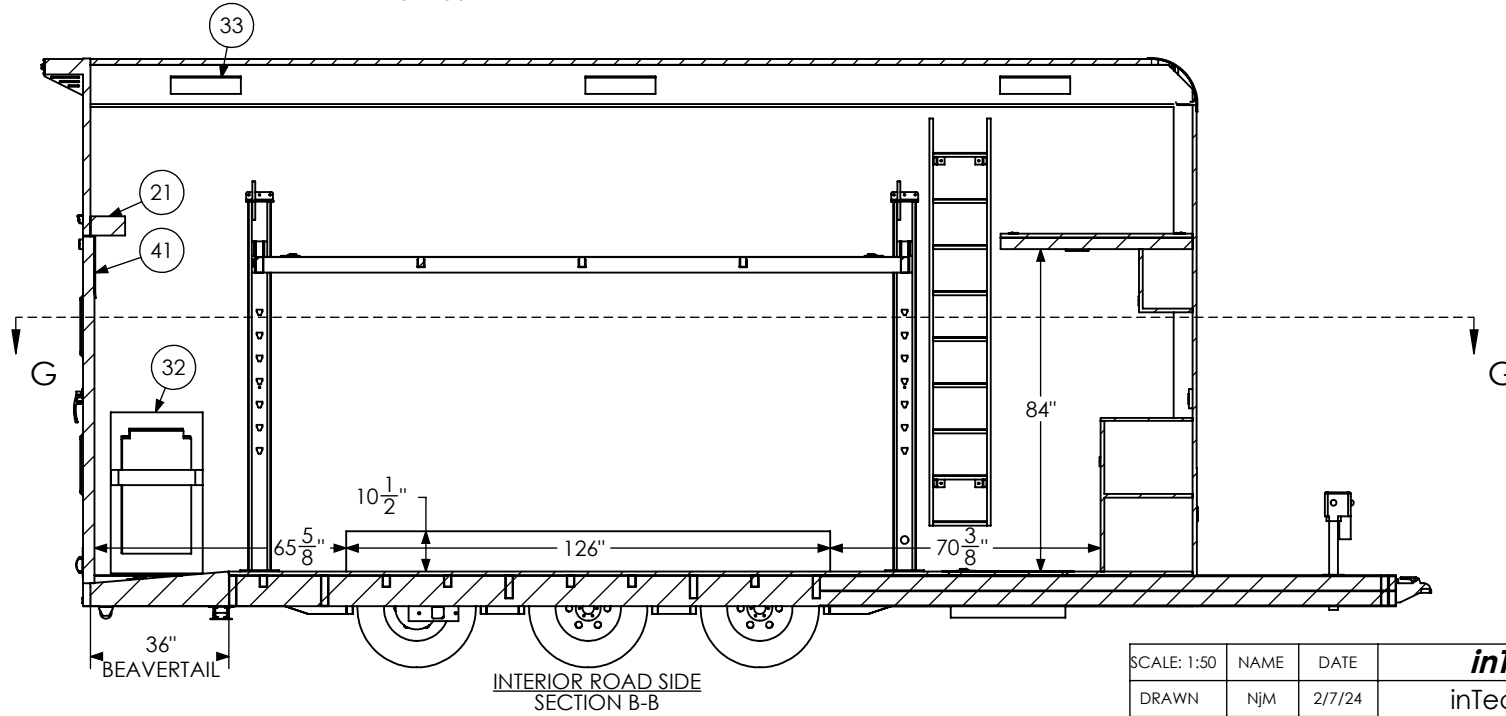
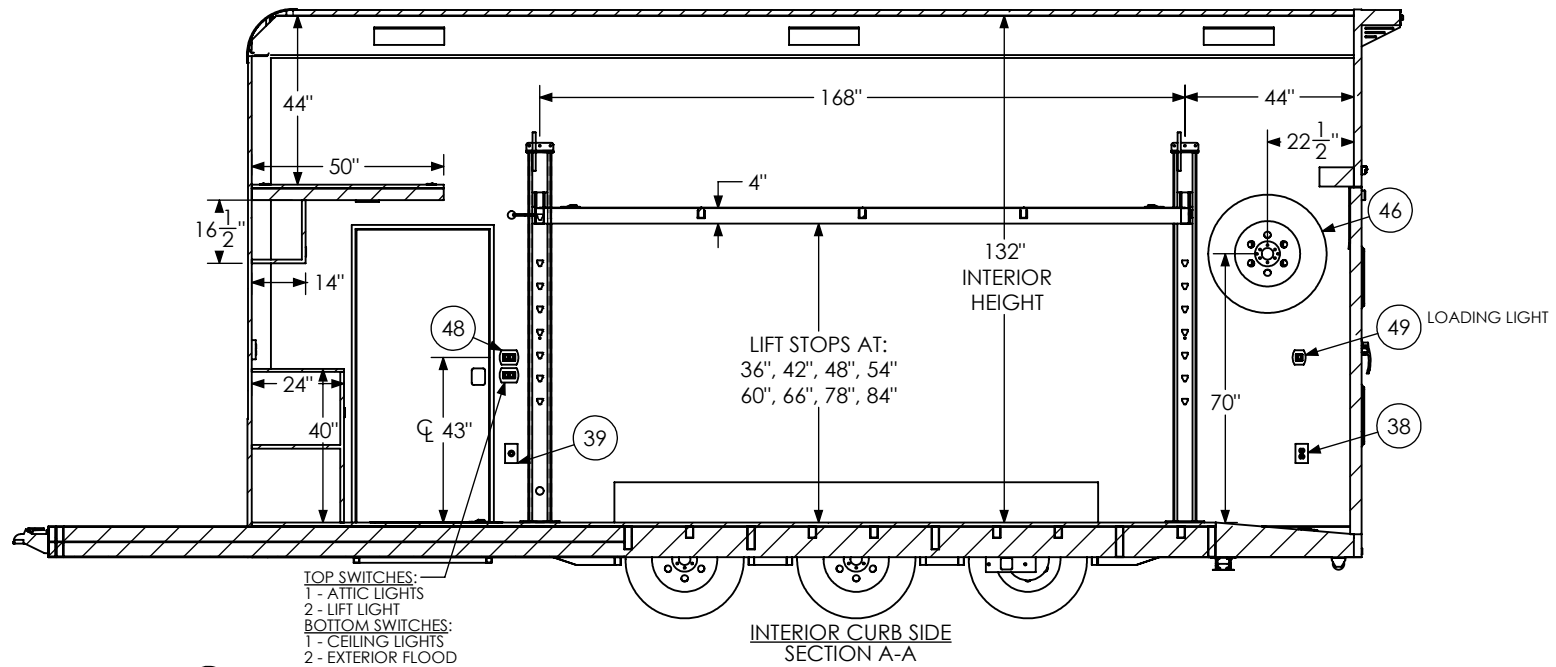


| ITEM NO. | FILE NAME | DESCRIPTION | QTY. |
|----------|-----------------------------|------------------------------|------|
| 1 | Attic - BSL | | 1 |
| 2 | Axle, Dexter | 6000#, 22.5 UP, 93HF, 78AB T | 3 |
| 11 | BSL Cabinet, Overhead | | 1 |
| 12 | BSL Cabinet, Straight Base | | 1 |
| 13 | Battery Box | | 1 |
| 14 | Battery Vent | | 1 |
| 15 | Bumpers | 1" | 1 |
| 16 | Cast Corners | | 1 |
| 17 | Caster Wheel | | 2 |
| 19 | Clearance Light | Red Lens | 9 |
| 20 | Coupler - Flat Nose | 25K - Bulldog | 1 |
| 21 | Cover, Spring Assist | | 1 |
| 22 | D-Ring | 5,000 | 8 |
| 23 | Door, Entrance | 36" x 78" | 1 |
| 26 | In-Floor Compartment - Lite | Hydraulics Box (14"x30") | 1 |
| 27 | Jack, Power | 4500# | 1 |
| 28 | Jack, Stabilizer | | 2 |
| 29 | LICENSE PLATE BRACKET | | 1 |
| 30 | Ladder - BSL | 16" x 106" | 1 |
| 31 | Lift Assembly SS -BSL | 14' | 1 |
| 32 | Lift Ramp Storage Assembly | | 1 |
| 33 | Light | 18" 12v LED | 8 |
| 34 | Light, License Plate | | 1 |
| 35 | Load Center | 30 Amp L/C - 60 Amp Conv | 1 |
| 36 | Loading Light - LED | 13.7" 12V Loading Light | 3 |
| 37 | Motorbase Plug | 30 Amp | 1 |
| 38 | Outlet | 120V 20 Amp | 4 |
| 39 | Outlet | Lift Control Plug | 1 |
| 40 | Paddle Latch | | 2 |
| 41 | Ramp Extension | 16" Transition Flap | 1 |
| 43 | Reflector | Amber | 2 |
| 44 | Rope Ring | | 6 |
| 45 | Slide Out Step | 36" Wide | 1 |
| 46 | Spare Tire Assembly | | 1 |
| 47 | Switch | 12v Cutoff | 1 |
| 48 | Switch | 2 - 12V Switches | 2 |
| 49 | Switch | 1 - 12V Switch | 1 |
| 50 | Tail Light | Slimline | 4 |
| 51 | Tire | ST235/80R16 | 6 |
| 53 | Winch Plate | | 1 |



| | | | | |
|--|------|--------|--|--------------|
| SCALE: 1:50 | NAME | DATE | <i>inTech Trailers</i> | |
| DRAWN | NjM | 2/7/24 | inTech - Lite Stacker BSL8.5x24TTA4 - STANDARD BOM | |
| ALL DIMENSIONS ARE IN INCHES AND ARE NOMINAL. DIMENSIONS ON ACTUAL TRAILER MAY VARY FROM WHAT IS SHOWN ON PRINT BASED ON ACTUAL FRAMING AND TRAILER STRUCTURE. UNLESS NOTED AS CRITICAL. | | | DWG. NO. | SHEET 1 OF 5 |
| | | | BSL8.5x24TTA Trailer Assembly - Standard | REV. F |

PROPRIETARY AND CONFIDENTIAL
 THE INFORMATION CONTAINED IN THIS DRAWING IS THE SOLE PROPERTY OF INTECH TRAILERS. ANY REPRODUCTION IN PART OR AS A WHOLE WITHOUT THE WRITTEN PERMISSION OF INTECH TRAILERS IS PROHIBITED.

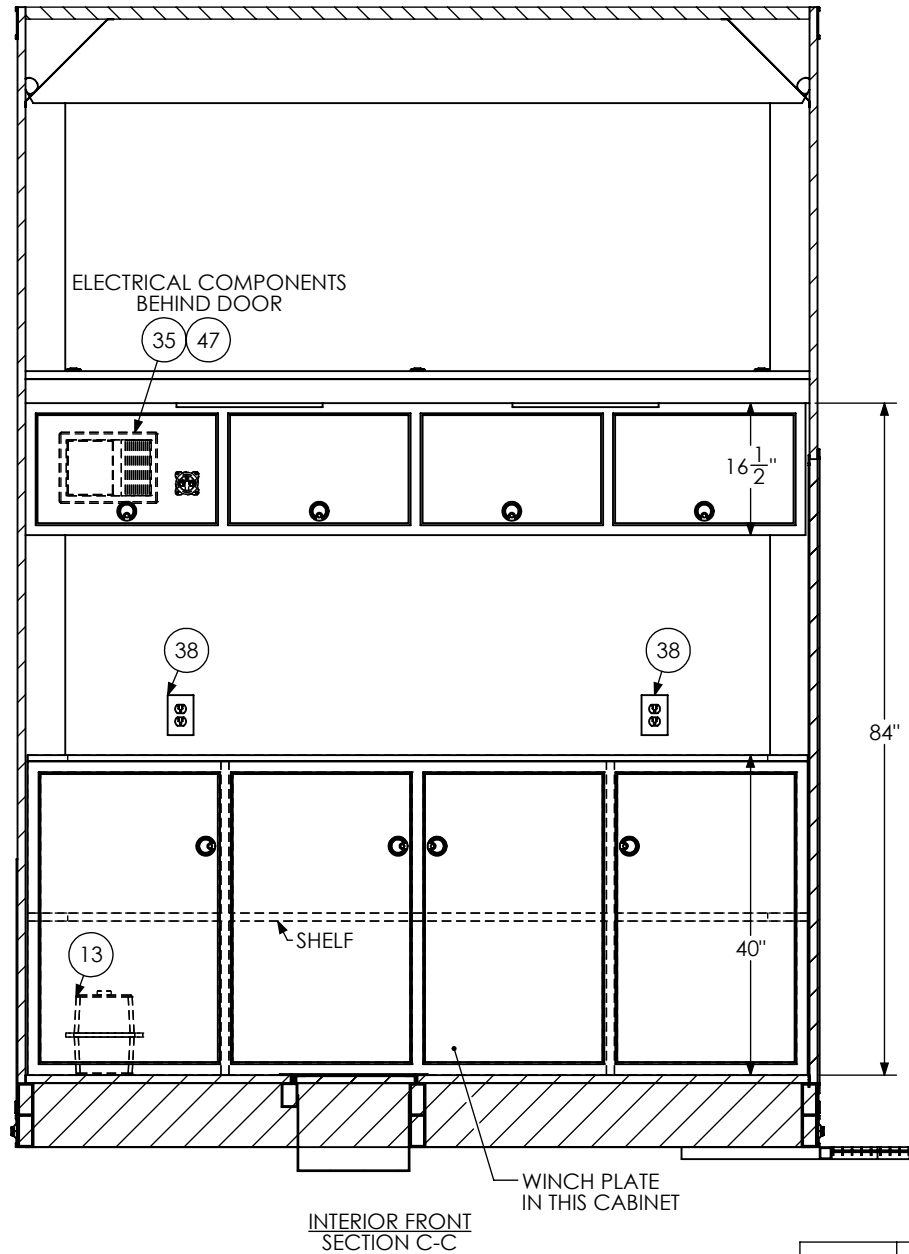


| | | |
|-------------|------|--------|
| SCALE: 1:50 | NAME | DATE |
| DRAWN | NjM | 2/7/24 |

ALL DIMENSIONS ARE IN INCHES AND ARE NOMINAL. DIMENSIONS ON ACTUAL TRAILER MAY VARY FROM WHAT IS SHOWN ON PRINT BASED ON ACTUAL FRAMING AND TRAILER STRUCTURE. UNLESS NOTED AS CRITICAL

PROPRIETARY AND CONFIDENTIAL
THE INFORMATION CONTAINED IN THIS DRAWING IS THE SOLE PROPERTY OF INTECH TRAILERS. ANY REPRODUCTION IN PART OR AS A WHOLE WITHOUT THE WRITTEN PERMISSION OF INTECH TRAILERS IS PROHIBITED.

| | | |
|---|--------------|-----------|
| <i>inTech Trailers</i> | | |
| inTech - Lite Stacker BSL8.5x24TTA4 - STANDARD INTERIOR SIDES | | |
| DWG. NO. BSL8.5x24TTA Trailer Assembly - Standard | SHEET 3 OF 5 | REV. F |

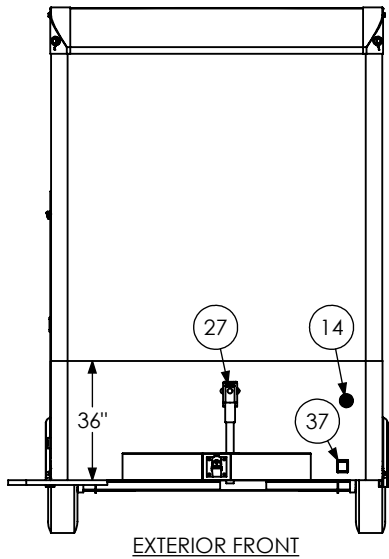


PROPRIETARY AND CONFIDENTIAL
 THE INFORMATION CONTAINED IN THIS DRAWING IS THE
 SOLE PROPERTY OF INTECH TRAILERS. ANY REPRODUCTION
 IN PART OR AS A WHOLE WITHOUT THE WRITTEN PERMISSION
 OF INTECH TRAILERS IS PROHIBITED.

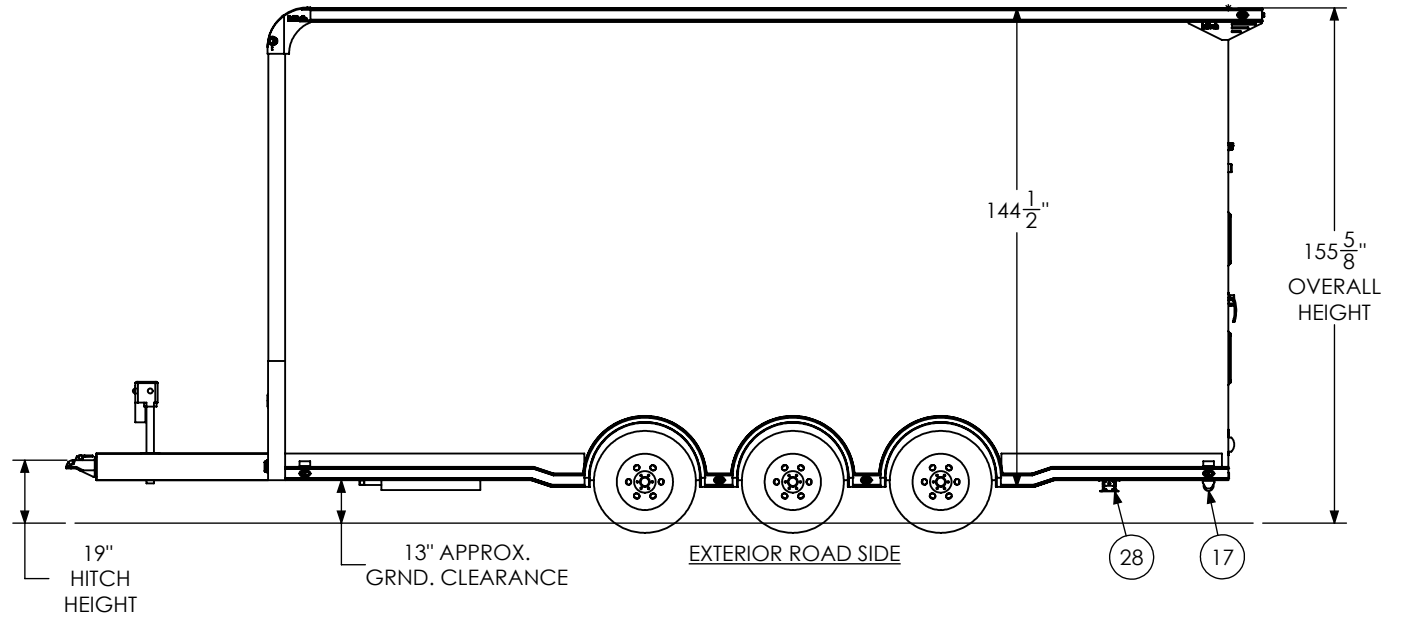
| | | |
|-------------|------|--------|
| SCALE: 1:24 | NAME | DATE |
| DRAWN | NjM | 2/7/24 |

ALL DIMENSIONS ARE IN INCHES
 AND ARE NOMINAL. DIMENSIONS
 ON ACTUAL TRAILER MAY VARY
 FROM WHAT IS SHOWN ON PRINT
 BASED ON ACTUAL FRAMING AND
 TRAILER STRUCTURE. UNLESS
 NOTED AS CRITICAL

| | | |
|---|--------------|-----------|
| <i>inTech Trailers</i> | | |
| inTech - Lite Stacker BSL8.5x24TTA4 - STANDARD INTERIOR FRONT | | |
| DWG. NO. BSL8.5x24TTA Trailer Assembly - Standard | SHEET 4 OF 5 | REV. F |



EXTERIOR FRONT

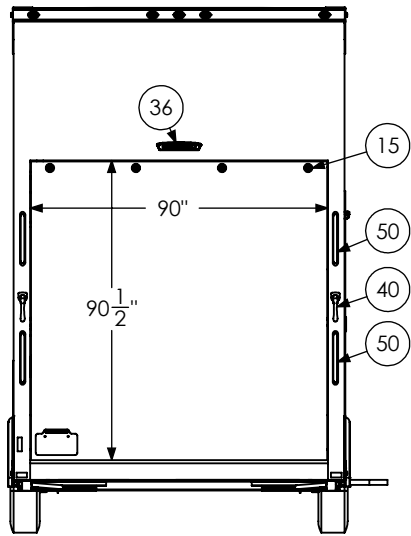


19" HITCH HEIGHT

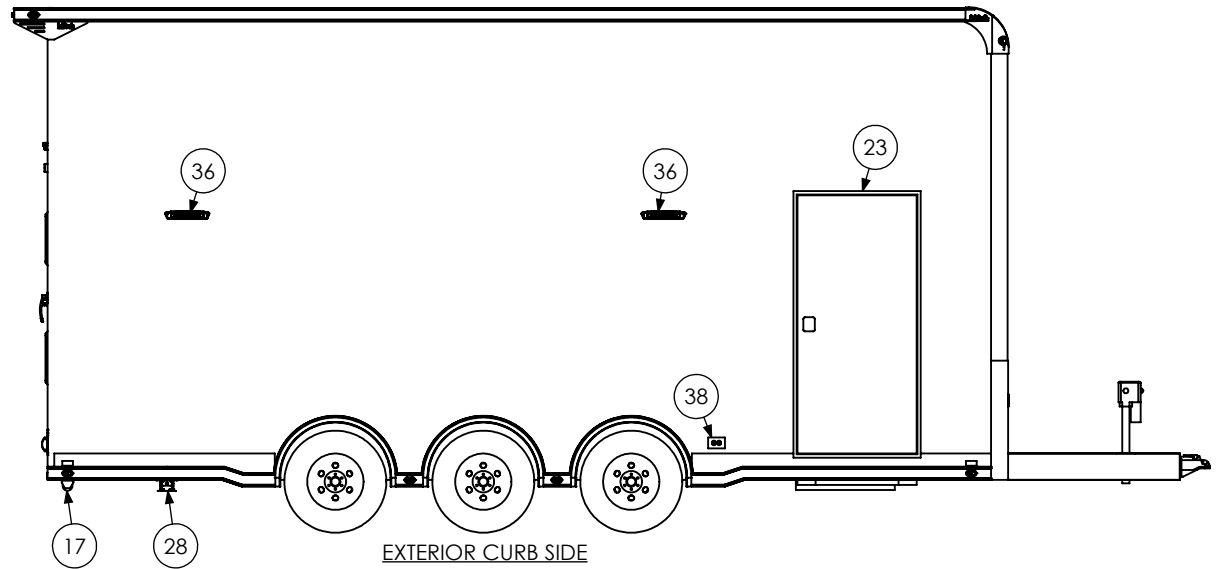
13" APPROX. GRND. CLEARANCE

EXTERIOR ROAD SIDE

155 5/8" OVERALL HEIGHT



EXTERIOR REAR



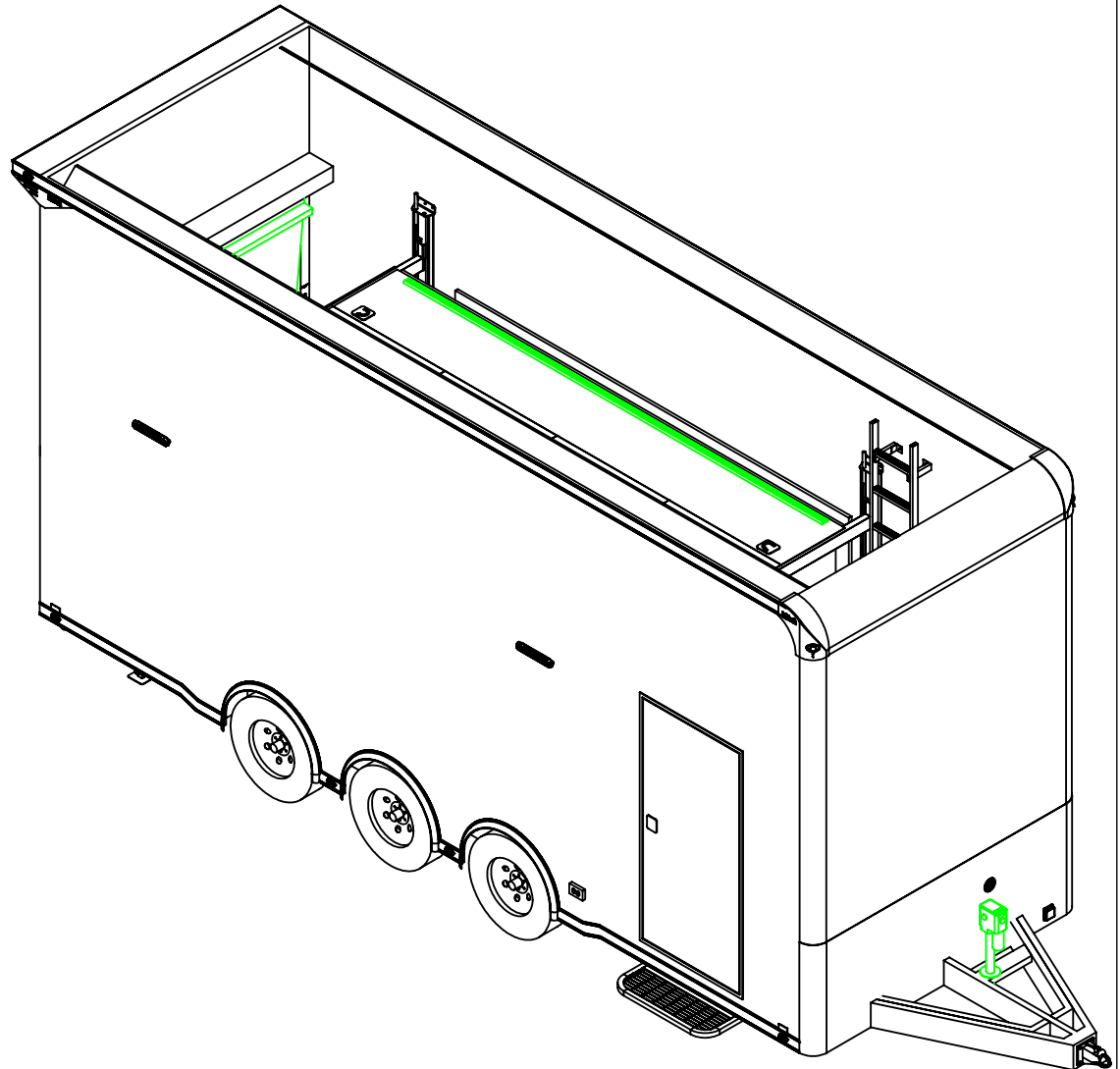
EXTERIOR CURB SIDE

PROPRIETARY AND CONFIDENTIAL
 THE INFORMATION CONTAINED IN THIS DRAWING IS THE SOLE PROPERTY OF INTECH TRAILERS. ANY REPRODUCTION IN PART OR AS A WHOLE WITHOUT THE WRITTEN PERMISSION OF INTECH TRAILERS IS PROHIBITED.

| | | |
|-------------|------|--------|
| SCALE: 1:58 | NAME | DATE |
| DRAWN | NjM | 2/7/24 |

ALL DIMENSIONS ARE IN INCHES AND ARE NOMINAL. DIMENSIONS ON ACTUAL TRAILER MAY VARY FROM WHAT IS SHOWN ON PRINT BASED ON ACTUAL FRAMING AND TRAILER STRUCTURE. UNLESS NOTED AS CRITICAL

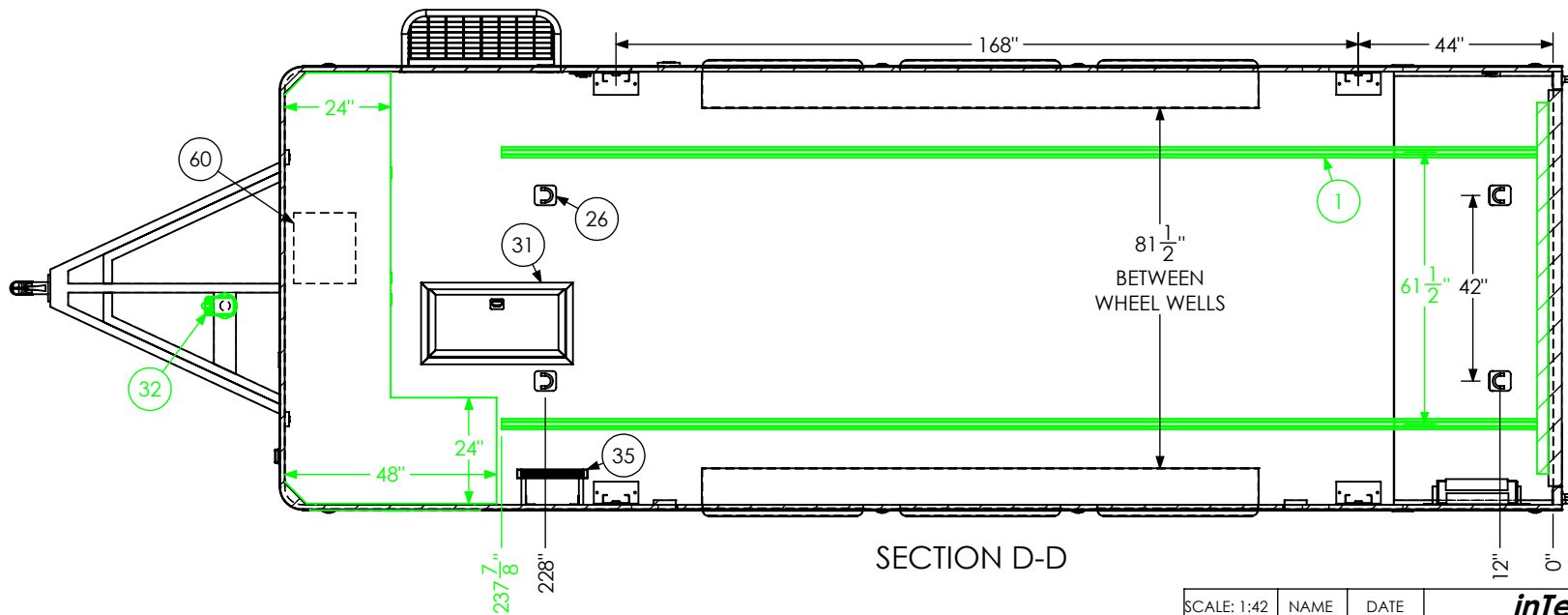
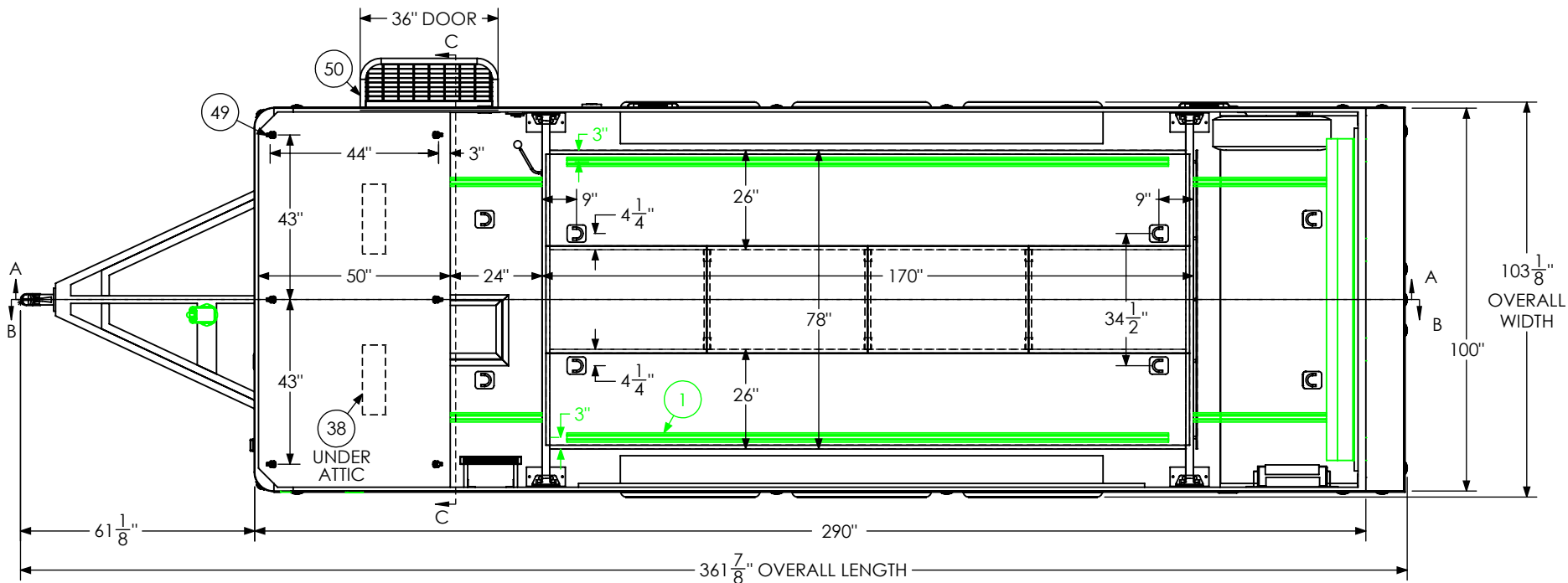
| | | |
|---|--------------|-----------|
| <i>inTech Trailers</i> | | |
| inTech - Lite Stacker BSL8.5x24TTA4 - STANDARD EXTERIOR | | |
| DWG. NO. BSL8.5x24TTA Trailer Assembly - Standard | SHEET 5 OF 5 | REV. F |



| ITEM NO. | FILE NAME | DESCRIPTION | QTY |
|----------|-----------------------------|------------------------------|-----|
| 1 | Airline Track | | 2 |
| 2 | Attic - BSL | | 1 |
| 3 | Axle, Dexter | 6000#, 22.5 UP, 93HF, 78AB T | 3 |
| 15 | BSL Cabinet, L-Base | | 1 |
| 16 | BSL Cabinet, Overhead | | 1 |
| 17 | Battery Box | | 1 |
| 18 | Battery Vent | | 1 |
| 19 | Bumpers | 3" | 1 |
| 20 | Cast Corners | | 1 |
| 21 | Caster Wheel | | 2 |
| 24 | Coupler - Flat Nose | 25K - Bulldog | 1 |
| 25 | Cover, Spring Assist | | 1 |
| 26 | D-Ring | 5,000 | 8 |
| 27 | Door, Entrance | 36" x 78" | 1 |
| 28 | Door, Generator | 36" x 36" | 1 |
| 31 | In-Floor Compartment - Lite | Hydraulics Box (14"x30") | 1 |
| 32 | Jack, Power | 4500# | 1 |
| 33 | Jack, Stabilizer | | 2 |
| 34 | LICENSE PLATE BRACKET | | 1 |
| 35 | Ladder - BSL | 16" x 106" | 1 |
| 36 | Lift Assembly SS -BSL | 14' | 1 |
| 37 | Lift Ramp Storage Assembly | | 1 |
| 38 | Light | 18" 12v LED | 8 |
| 39 | Light, License Plate | | 1 |
| 40 | Load Center | 30 Amp L/C - 60 Amp Conv | 1 |
| 41 | Loading Light - LED | 13.7" 12V Loading Light | 3 |
| 42 | Motorbase Plug | 30 Amp | 1 |
| 43 | Outlet | 120V 20 Amp | 4 |
| 44 | Outlet | Lift Control Plug | 1 |
| 45 | Paddle Latch | | 2 |
| 46 | Ramp Extension | 48" x 84" | 1 |
| 49 | Rope Ring | | 6 |
| 50 | Slide Out Step | 36" Wide | 1 |
| 51 | Spare Tire Assembly | | 1 |
| 52 | Switch | 12v Cutoff | 1 |
| 53 | Switch | 2 - 12V Switches | 2 |
| 54 | Switch | 1 - 12V Switch | 1 |
| 55 | Tail Light | Slimline | 4 |
| 56 | Tire | ST235/80R16 | 6 |
| 60 | Winch Plate | | 1 |

T:\SolidWorks CAD\BSL\BSL8.5x24TTA4\

| | | | | |
|--|------|--------|---|--------------|
| SCALE: 1:50 | NAME | DATE | <i>inTech Trailers</i> | |
| DRAWN | NjM | 2/7/24 | inTech - Lite Stacker BSL8.5x24TTA4 OPTIONS BOM | |
| <small>ALL DIMENSIONS ARE IN INCHES AND ARE NOMINAL. DIMENSIONS ON ACTUAL TRAILER MAY VARY FROM WHAT IS SHOWN ON PRINT BASED ON ACTUAL FRAMING AND TRAILER STRUCTURE, UNLESS NOTED AS CRITICAL.</small> | | | DWG. NO. | SHEET 1 OF 5 |
| <small>PROPRIETARY AND CONFIDENTIAL THE INFORMATION CONTAINED IN THIS DRAWING IS THE SOLE PROPERTY OF INTECH TRAILERS. ANY REPRODUCTION IN PART OR AS A WHOLE WITHOUT THE WRITTEN PERMISSION OF INTECH TRAILERS IS PROHIBITED.</small> | | | BSL8.5x24TTA Trailer Assembly - Option | REV. G |



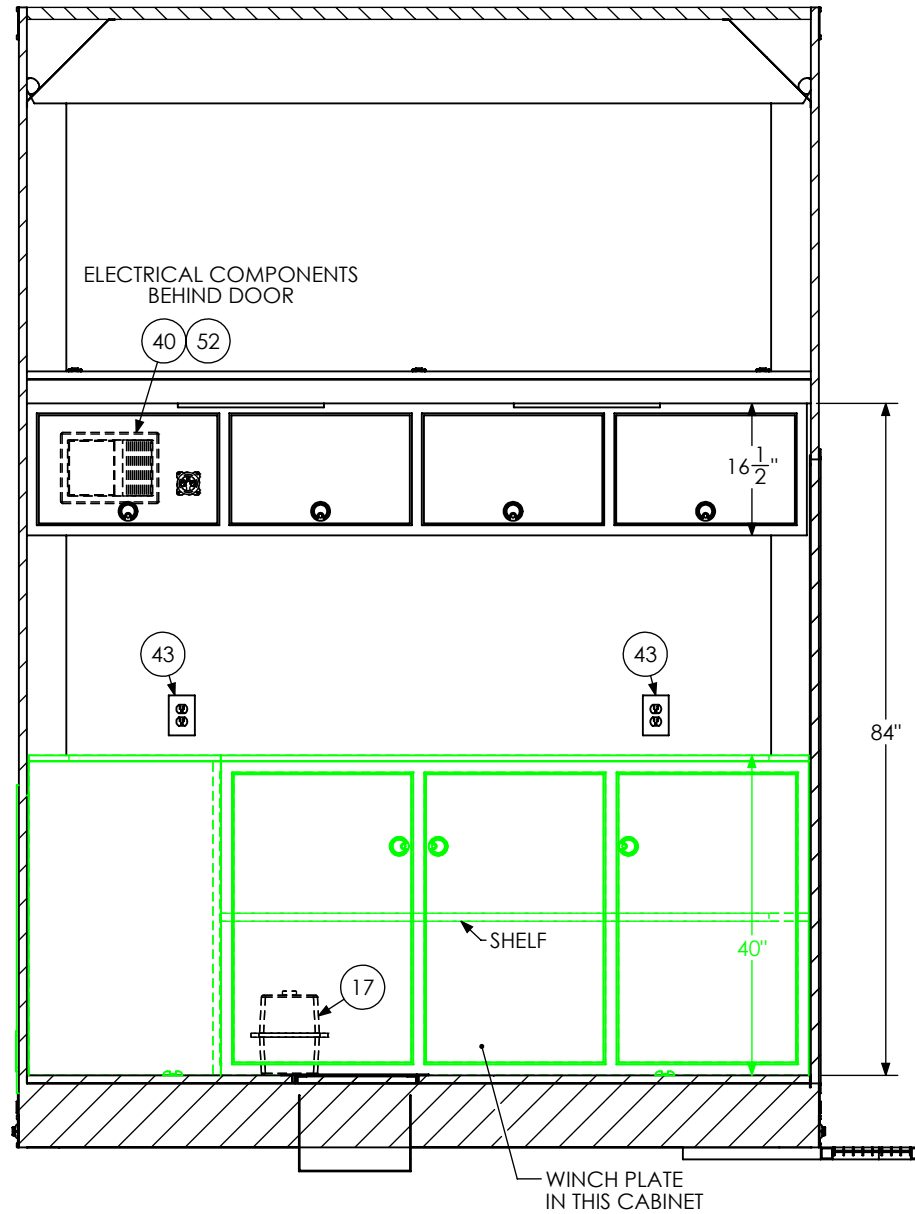
SECTION D-D

| | | |
|-------------|------|--------|
| SCALE: 1:42 | NAME | DATE |
| DRAWN | NjM | 2/7/24 |

ALL DIMENSIONS ARE IN INCHES AND ARE NOMINAL. DIMENSIONS ON ACTUAL TRAILER MAY VARY FROM WHAT IS SHOWN ON PRINT BASED ON ACTUAL FRAMING AND TRAILER STRUCTURE. UNLESS NOTED AS CRITICAL

PROPRIETARY AND CONFIDENTIAL
THE INFORMATION CONTAINED IN THIS DRAWING IS THE SOLE PROPERTY OF INTECH TRAILERS. ANY REPRODUCTION IN PART OR AS A WHOLE WITHOUT THE WRITTEN PERMISSION OF INTECH TRAILERS IS PROHIBITED.

| | | |
|---|--------------|-----------|
| inTech Trailers | | |
| inTech - Lite Stacker BSL8.5x24TTA4 OPTIONS FLOORPLAN | | |
| DWG. NO. BSL8.5x24TTA Trailer Assembly - Option | SHEET 2 OF 5 | REV. G |



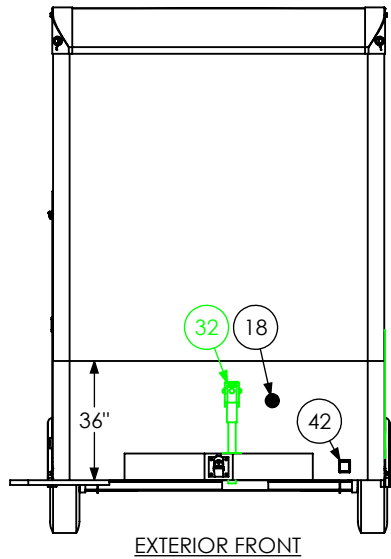
INTERIOR FRONT
SECTION C-C

PROPRIETARY AND CONFIDENTIAL
THE INFORMATION CONTAINED IN THIS DRAWING IS THE SOLE PROPERTY OF INTECH TRAILERS. ANY REPRODUCTION IN PART OR AS A WHOLE WITHOUT THE WRITTEN PERMISSION OF INTECH TRAILERS IS PROHIBITED.

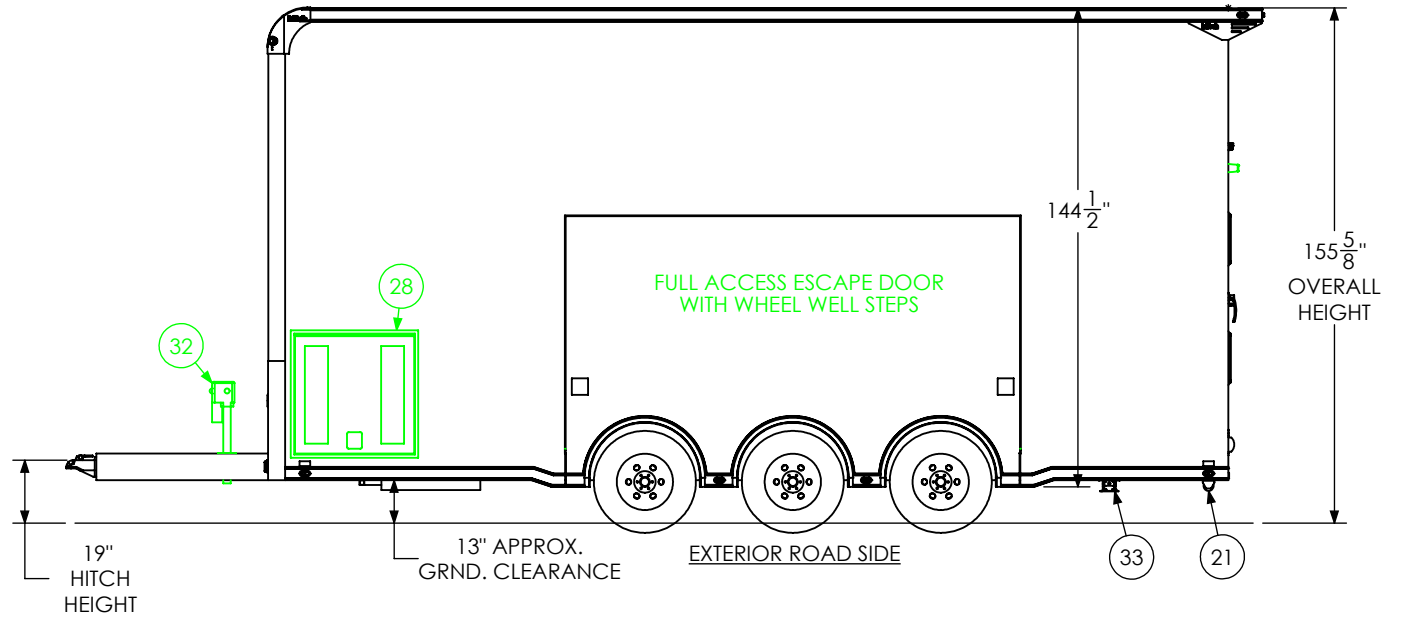
| | | |
|-------------|------|--------|
| SCALE: 1:24 | NAME | DATE |
| DRAWN | NjM | 2/7/24 |

ALL DIMENSIONS ARE IN INCHES AND ARE NOMINAL. DIMENSIONS ON ACTUAL TRAILER MAY VARY FROM WHAT IS SHOWN ON PRINT BASED ON ACTUAL FRAMING AND TRAILER STRUCTURE. UNLESS NOTED AS CRITICAL

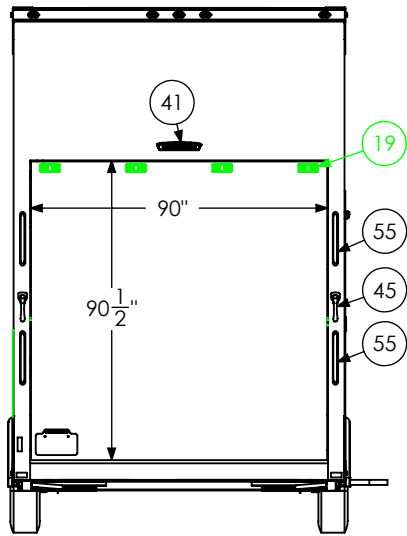
| | | |
|--|--------------|-----------|
| <i>inTech Trailers</i> | | |
| inTech - Lite Stacker BSL8.5x24TTA4 OPTIONS INTERIOR FRONT | | |
| DWG. NO. BSL8.5x24TTA Trailer Assembly - Option | SHEET 4 OF 5 | REV. G |



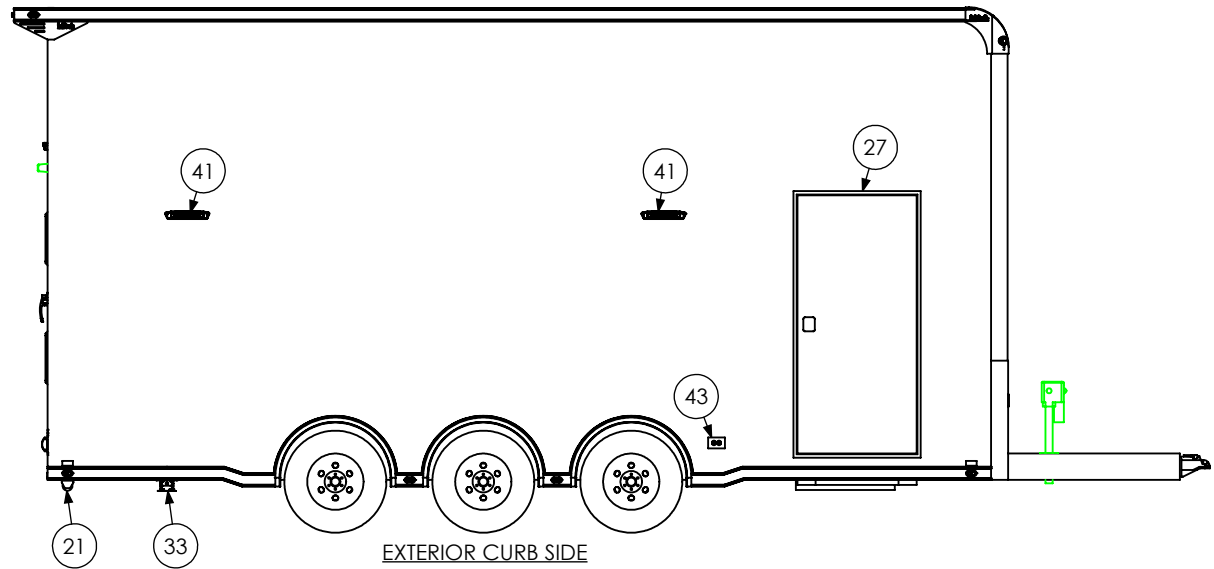
EXTERIOR FRONT



EXTERIOR ROAD SIDE



EXTERIOR REAR



EXTERIOR CURB SIDE

PROPRIETARY AND CONFIDENTIAL
 THE INFORMATION CONTAINED IN THIS DRAWING IS THE SOLE PROPERTY OF INTECH TRAILERS. ANY REPRODUCTION IN PART OR AS A WHOLE WITHOUT THE WRITTEN PERMISSION OF INTECH TRAILERS IS PROHIBITED.

| | | |
|--|------|--------|
| SCALE: 1:58 | NAME | DATE |
| DRAWN | NjM | 2/7/24 |
| ALL DIMENSIONS ARE IN INCHES AND ARE NOMINAL. DIMENSIONS ON ACTUAL TRAILER MAY VARY FROM WHAT IS SHOWN ON PRINT BASED ON ACTUAL FRAMING AND TRAILER STRUCTURE. UNLESS NOTED AS CRITICAL. | | |

| | | |
|--|--------------|-----------|
| <i>inTech Trailers</i> | | |
| inTech - Lite Stacker BSL8.5x24TTA4 OPTIONS EXTERIOR | | |
| DWG. NO. BSL8.5x24TTA Trailer Assembly - Option | SHEET 5 OF 5 | REV. G |